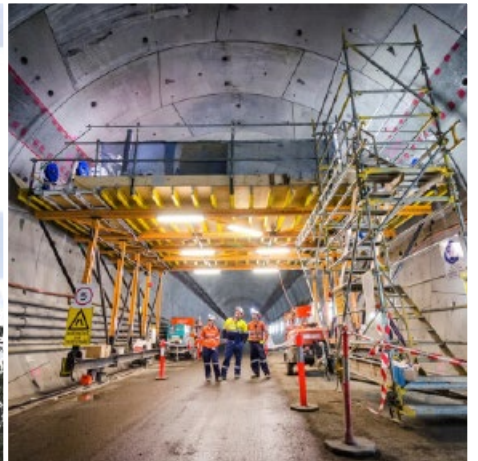




FORMWORK, SCAFFOLDING & SCREENS

CAPABILITY STATEMENT



We help build Australia **smarter.**



About **Acrow Group of Companies**

Australian publicly listed entity, **Acrow Formwork and Construction Services Ltd (ASX:ACF)** is made up of three distinct organisations representing the proudly Australian **Acrow Group of Companies**.

Acrow Formwork and Scaffolding Pty Ltd is one of the largest formwork and scaffolding companies in Australia, offering innovative and cost-effective solutions to major residential, commercial, civil and industrial customers.

In 2018, Acrow recognised an opportunity for integrated business solutions and acquired specialist screen systems provider, **Natform Pty Ltd**. Natform are the leading designer and hirer of screen systems for the construction industry.

With synergies across both businesses and a window to broaden their range of specialised formwork and scaffolding systems, Acrow acquired **Uni-span Australia Pty Ltd** in 2019. Uni-span is the exclusive distributor of ULMA Formwork systems in Australia, providing formwork and scaffolding solutions, equipment and services, complemented by in-house engineering and industrial labour supply.

Together, the **Acrow Group of Companies** has over a century of experience in the Australian market.

We operate in 11 locations across Australia, servicing the construction industry in the residential, commercial, civil and industrial sectors.

Our Branch network is made up of scaffolding, formwork and screen branches. With the strength and resources to attract the industry's best talent and a commitment to safety and outstanding service, we are a solution focused team, achieving the best outcome for our customers.



Our **vision** is to be the leading provider of smart integrated systems, dynamic front-line support and a continuous cost effective focus to help our customers achieve peak performance with zero harm.





ACROW SINCE 1936

NATFORM

uni-span  **ULMA**



Our Cultures and Values

Smart



- ✓ Open to change
- ✓ Embrace new ideas
- ✓ Sharing best practice
- ✓ Set industry standards
- ✓ Continuous improvement
- ✓ Proactive approach
- ✓ Solution focused

Can-do



- ✓ Safety first
- ✓ Can be trusted to deliver what was promised
- ✓ We are determined
- ✓ We are open, honest & always constructive
- ✓ We strive to be the best

Partners



- ✓ Our customers are at the heart of everything we do
- ✓ We are confident in ourselves and others
- ✓ We are always happy to help each other out
- ✓ We are one team

Our Strategy



Be recognised as the leading Engineered Formwork Sales & Hire Equipment Solutions provider in Australia.



Be recognised as the leading Engineered Scaffold Solutions provider to the Australian Industrial Scaffold market.



Recruit, train and retain the best management and engineering talent to drive the business.



Organic Growth opportunities across States, cross-sell and introduce new products.



Why choose **us**?

Proudly Australian & publicly listed entity
Acrow Formwork and Construction Service Ltd (ASX:ACF)

Safety is our priority.
Customer service focused.
Compliant with AU standards, codes & regulations.

Largest & most versatile range of formwork,
scaffolding & screen products in Australia.

Australia's **largest dedicated temporary works design team**,
offering innovative engineered solutions & technical support
throughout the duration of your project.

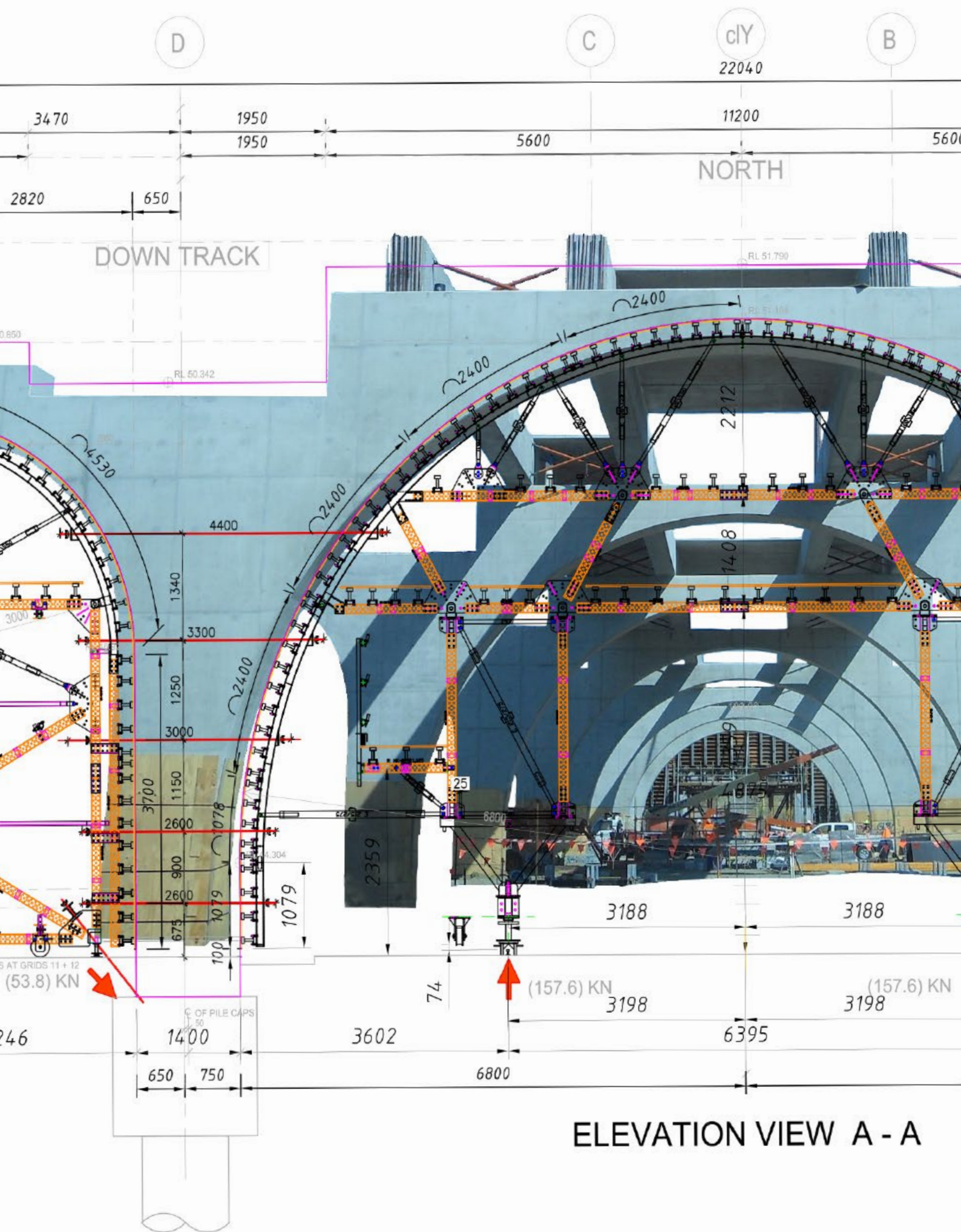


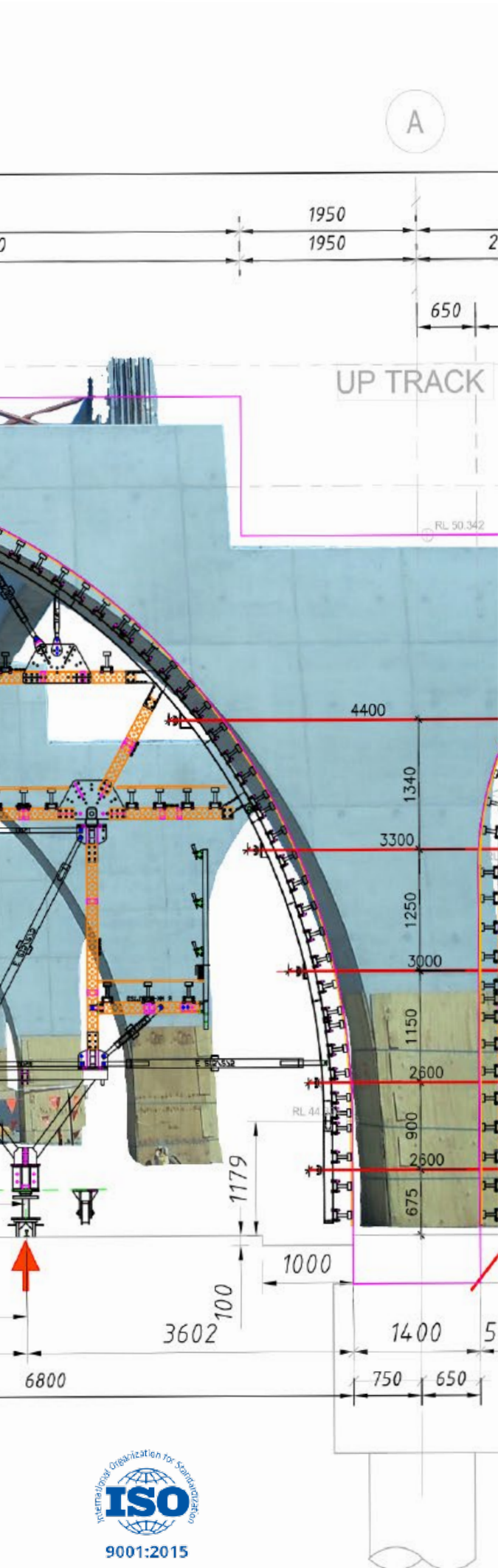


ACROW SINCE 1936

NATFORM

uni-span  **ULMA**





Engineering and Design

The Engineering and Design division of our business is ISO9001:2015 accredited.

Our team has thorough knowledge of the relevant regulatory requirements, codes of practice and Australian Standards, which enable us to advise our clients on design and compliance demands for their project needs.

Our objective is to offer innovative-engineered solutions, providing both safety and cost savings for our clients. This is why our engineering and design teams work closely with our clients before the project's inception.

By using practical solutions, supported by safe and economical design in line with Australian Standards, codes of practice and the relevant regulations, we can tailor a cost effective solution for your project.

Whether your project requirement is formwork, scaffolding or screen related, our diverse product range offers superior quality backed by renowned technical support and engineering expertise.

Bespoke solutions

HARWOOD BRIDGE

Harwood, NSW

TOOWOOMBA SECOND RANGE CROSSING

Toowoomba, QLD

LEGACY WAY

Brisbane, QLD

SUNMETALS EXPANSION

Townsville, QLD

METRO TUNNEL

Melbourne, VIC

THE LANDMARK, ST LEONARDS

Sydney, NSW



NATFORM



Local **knowledge.** National **ne**



Residential

Commercial

Civil

Industrial

network.



Our Team



12

Senior Managers

40

Engineers/Designers

37

Project Managers & Sales

40

Finance & Admin

72

Support Staff

80+

Scaffolders



NATFORM



Products and **Services**

We maintain one of the most significant stocks of scaffold, formwork and screen systems in Australia. This is supported by the largest dedicated temporary works design team in the country, with design offices in Brisbane, Gold Coast, Sydney, Melbourne and Perth.

Our professional in-house engineering team, including Chartered Engineers, are suitably qualified and highly experienced with an exceptional reputation in the formwork, falsework, shoring, scaffolding and screen industry.

Products and services include:

- A range of modular formwork systems to provide optimal solutions to construction requirements.
- Modular scaffold and slab edge protection systems.
- Lightweight scaffold components (tube, coupler) to provide customised scaffolding solutions.
- Safety screen systems and edge protection solutions.
- Highly experienced project managers and scaffolders to provide a safe, efficient and hassle free installation and dismantle of scaffold process.
- Falsework, design and engineering certification as required to AU standards.
- Acrow Marketplace Online Store - Click and Collect service for formwork hardware and consumables, scaffolding, containment, timber and ply.



Formwork range

WALL SYSTEMS

Coreform, Slim-Lite soldier, Slim-max soldier, Acrowall-60, Acrowall-80, ORMA, SMK - Single Sided, LGW & Enkoform VMK.

FALSEWORK

Supercuplok, Acrow Prop, V-Shore, Acrowform, Aluprop, EP Prop, CC-4 Panel/Ply & Enkoflex.

SHORING

GASS, Supercuplok, Aluminium GASS, Powershore, V-Shore & MK Shoring.

BRIDGES

MK Structures, Supercuplok, MK Headstocks, Edge Protection, Bespoke formwork, CVS - Cantilever, Slim-lite soldier, Slim-max soldier & Enkoform VMK.

TUNNELS

MK Structures, Powershore, Acrowall-80, A-Frame, SMK - Single sided, GASS, ORMA, Acrowform, Aluprop & Soldiers.

CLIMBING

KSP - Internal Shaft Platform & RKS - Rail Climbing System.

Scaffold range

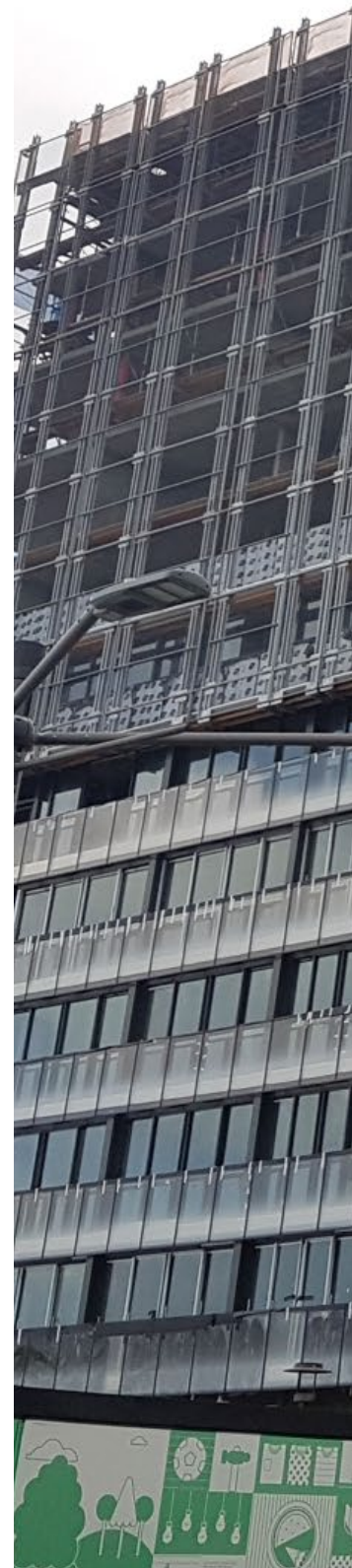
Cuplok

Supercuplok

Quickstage

Scaffold Accessories

Uni-mesh FR™





Screen Systems

Structural Screens

Structure & Finishing Screens

Trailing Screens

Hydraulic Climbing

Stretcher Stairs

Construction Stairs

Handrail System

Screen System Applications

Commercial Projects

Residential Projects

Civil Projects

Low or High Rise Projects

Construction Joints

Building Extensions

Structural Steel Construction

ACROW SINCE 1936

NATFORM

uni-span

ULMA

Safety is our **priority**

Due to the high consequence nature of incidents that can occur when working at heights, safety is our priority.

Policies and procedures have been developed with the objective of maintaining internal consistency on safety and risk management across the business. These procedures ensure that all employees and subcontractors are trained in and follow industry leading safe work practices and that our products and structural designs allow for the safest environment practicable.

Our Environmental Health & Safety (EHS) Management System sets the framework for how we manage all EHS issues. Strategic EHS Plans and an EHS Manual provide the guidance for sites in planning, implementing and improving EHS performance. Every EHS document and procedure has been prepared in accordance with the relevant industry Acts, regulations, codes of practice and Australian Standards.

These form the basis for site-based EHS Management Systems that are established for every project undertaken by the Acrow Group of Companies.

All EHS related documentation is stored on our secure intranet and available to all employees. We place a strong emphasis on incident reporting and report monthly EHS statistics to the Board of Directors, as their involvement, contribution and leadership in our EHS Management System is crucial.

Guided by the Hierarchy of Control, our objective is to continually identify hazards and eliminate them as a first resort, substitute, isolate or control them.

SITE DOCUMENTATION & PROCESSES

- Site EHS Management Plan, including Safe Work Method Statements, Risk Management and Emergency Response.
- Contractor Safety and qualification records.
- Toolbox Meetings and regular structured communication sessions to raise risks and pass on control measures.

SAFETY INITIATIVES & INJURY PREVENTION

Safety Conversations is a program of regular, planned one-on-one conversations between managers/team leaders, employee/contractor about safety aspects of an employee's/contractors job. The program has several objectives:

- Provide positive feedback on safe behaviours.
- Discuss remedies for potential "at risk" behaviour.
- Improve work practices so potential incidents can be avoided.
- Collect data on safe and at-risk behaviour and related issues in the workplace.





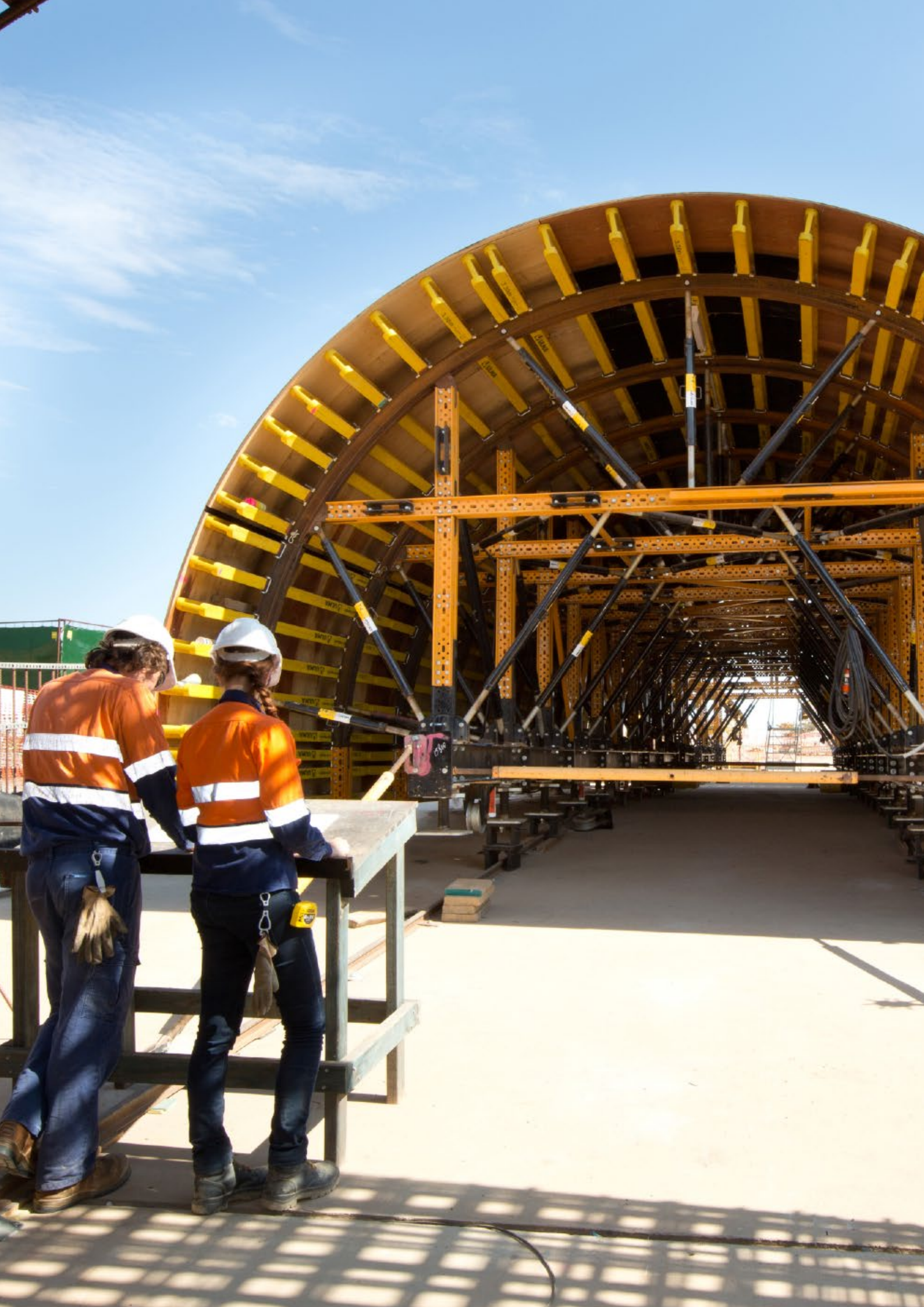
ACROW

SINCE
1936

NATFORM

uni-span

ULMA





Highly Experienced

Together, the Acrow Group of Companies has over a century of experience in the Australian market.

Led by safety, engineering and project management professionals with up to 30 years experience, the Acrow Group of Companies has gathered market leading specialists in the business.

This specialised team is the heart beat of the group.

Our objective is to offer innovative-engineered solutions, providing both safety and cost savings for our clients. This is why our engineering and design teams work closely with our clients before the project's inception.

By using practical solutions, supported by safe and economical design in line with Australian Standards, codes of practice and the relevant regulations, we can tailor a cost effective solution for your project.

Whether your project requires formwork, scaffolding, safety screens or edge protection, our diverse product range offers superior quality backed by renowned technical support and engineering expertise.

Our **project** portfolio

SUNMETALS EXPANSION, QLD

Zico Formwork
New World Engineering

HARWOOD BRIDGE, NSW

Acciona Ferrovia JV

METRO TUNNEL, VIC

CYP, Lendlease, John Holland, Bouygues Construction

OPERA RESIDENCES, NSW

Richard Crookes Construction

AIRPORT LINK, QLD

Thiess John Holland JV

GATEWAY, WA

CPB Georgiou JV

ORIGIN APLNG, QLD

Origin Energy

TOOWOOMBA SECOND RANGE CROSSING, QLD

Nexus Delivery

180 GEORGE STREET, NSW

Betaform, Meriton

QUEENS WHARF, QLD

Multiplex

MELBOURNE CUP, FLEMINGTON, VIC

SMS Scaffolding



NATFORM



Industrial Labour

This business division has a strong focus on the industrial, oil, gas and mining sectors, concentrating on the supply of permanent, contract and interim personnel.

We believe a high quality individual; with the appropriate skill set and cultural alignment ensures the making of a good employee and more importantly a strong team member.

We source staff from across Australasia with a strong focus on Local Industry Participation (local suppliers, cross-skilled local and indigenous workforce).

The Acrow Group of Companies integrity is apparent in our dedication to safety, the environment and in the quality we deliver. Our Industrial division is ISO9001:2015, ISO45001:2018 and ISO14001:2015 accredited.

We develop and maintain loyal relationships with our customers, which is indicative of the service we provide. Our highly experienced team sets us apart from our competitors.

Our employees are trusted and have the capacity, commitment, passion and versatility to achieve outstanding outcomes for our customers.

We provide labour teams for short, long term contracts or permanent placements.

Such scopes of work include commissioning, decommissioning, increases in project demands, shut-downs and maintenance crews.

The supply of skilled labour is complemented by our scaffolding, formwork and screen solutions.

Local & Indigenous Participation

Aboriginal and Torres Strait Islander Engagement and Participation Management Plan forms part of every project and addresses the overall management of the project including:

- the systems and methodologies we employ to ensure compliance with the Indigenous Peoples Participation requirements of each contract,
- the project management approach specific to regions,
- our indigenous training, employment and engagement approach
- industrial relations strategy and risk management; and
- the interfaces between our Project Management Plan and the processes and responsibility for management of these.

As a business, we value diversity and understand that initiatives are integral to ongoing success. As part of this commitment, the Acrow Group of Companies are looking to strengthen ties with the indigenous community by providing fulfilling careers and opportunities for indigenous people across the country.

EBA & Fair Work compliance

The Industrial business division has a registered and valid EBA (Enterprise Bargaining Agreement), meeting the requirements of section 11 of the Building Code 2016.



On-site **project** portfolio

ORIGIN ENERGY

APLNG, Surat Basin, QLD
12 x on-site staff

VALMEC

Atlas Gas Pipeline, Surat Basin, QLD
4 x on-site staff

DOWNER EDI

Electrical Santos Hub 2, QLD
4 x on-site staff

SUNMETALS EXPANSION

Townsville, QLD
20 x on-site staff



ACROW

SINCE
1936

NATFORM

uni-span

ULMA



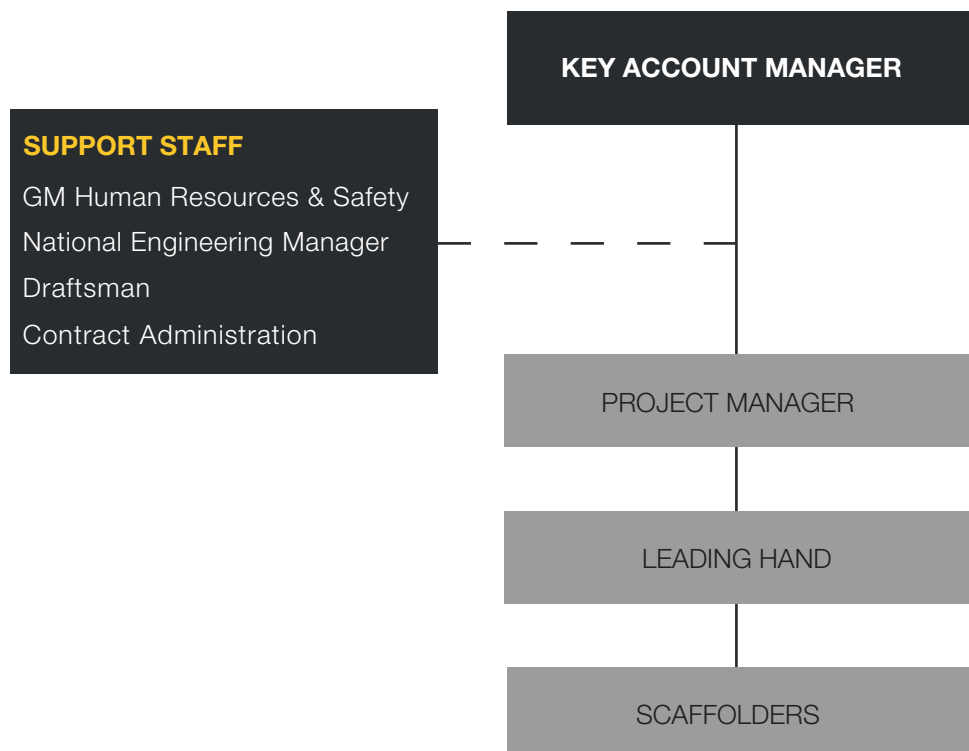
On-site Project Management

The Acrow Group of Companies maintains a strict chain of responsibility and accountability for day to day operations, including all on-site projects, ensuring our stringent workplace health and safety policies and processes are being adhered to.

Dedicated on-site teams are made up of suitably qualified scaffolders/trades, holding valid licences, that are recorded and monitored throughout the project's lifespan. All staff are inducted prior to commencing works and refresher training is carried out as per the project's requirements.

Project Managers play an important role in maintaining the team's objectives. Physical presence on-site is vital to coordinate and communicate the operational and reporting requirements to the support staff team. This team is made up of our GM Human Resources & Safety, National Engineering Manager, Draftsman and Contract Administration.

A typical major on-site scaffolding project will have the following organisational structure:



Insurance **covered**

The Acrow Group of Companies prioritises safety. Even with policies and procedures in place, high risk construction work is prone to hazards. With stringent risk management, a thorough understanding of and compliance to the relevant Australian standards and Codes of Practice, insurance is still a prerequisite.

Acrow Group of Companies **Insurance portfolio**

INDUSTRIAL SPECIAL RISKS

PUBLIC & PRODUCTS LIABILITY

PROFESSIONAL INDEMNITY

MOTOR VEHICLE INSURANCE

MARINE TRANSPORT INSURANCE

WORKCOVER

Acrow Formwork & Scaffolding Pty Ltd

QLD - WorkCover QLD

NSW - iCare Workers Insurance

SA - ReturnToWorkSA

TAS - TAS Workers Compensation

VIC - WorkSafe Victoria

WA - WA Workers Compensation

Uni-span Australia Pty Ltd

QLD - WorkCover QLD

NSW - iCare Workers Insurance

NSW - Coal Mines Insurance

Natform Pty Ltd

QLD - WorkCover QLD

NSW - iCare Workers Insurance

VIC - WorkSafe Victoria





RIANS

DANGER
OVERHEAD
POWER LINES

ACROW

SINCE
1936

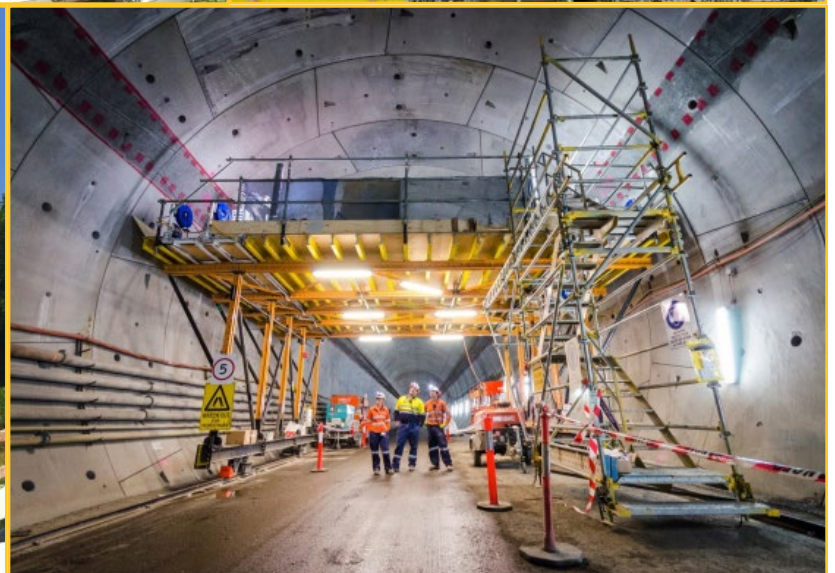
NATFORM

uni-span

ULMA

Project Gallery





We help build Australia **smarter.**



Contact

Phone: 1300 138 362

www.acrow.com.au