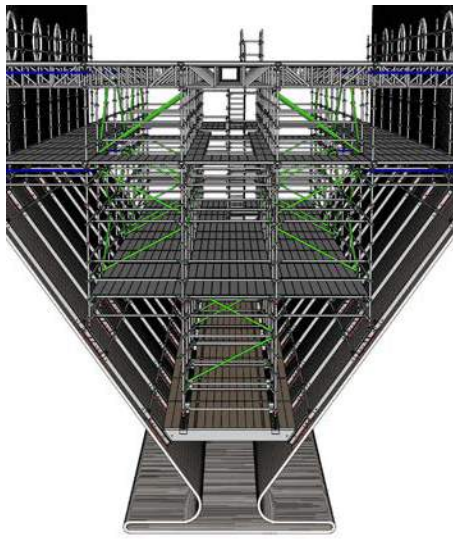


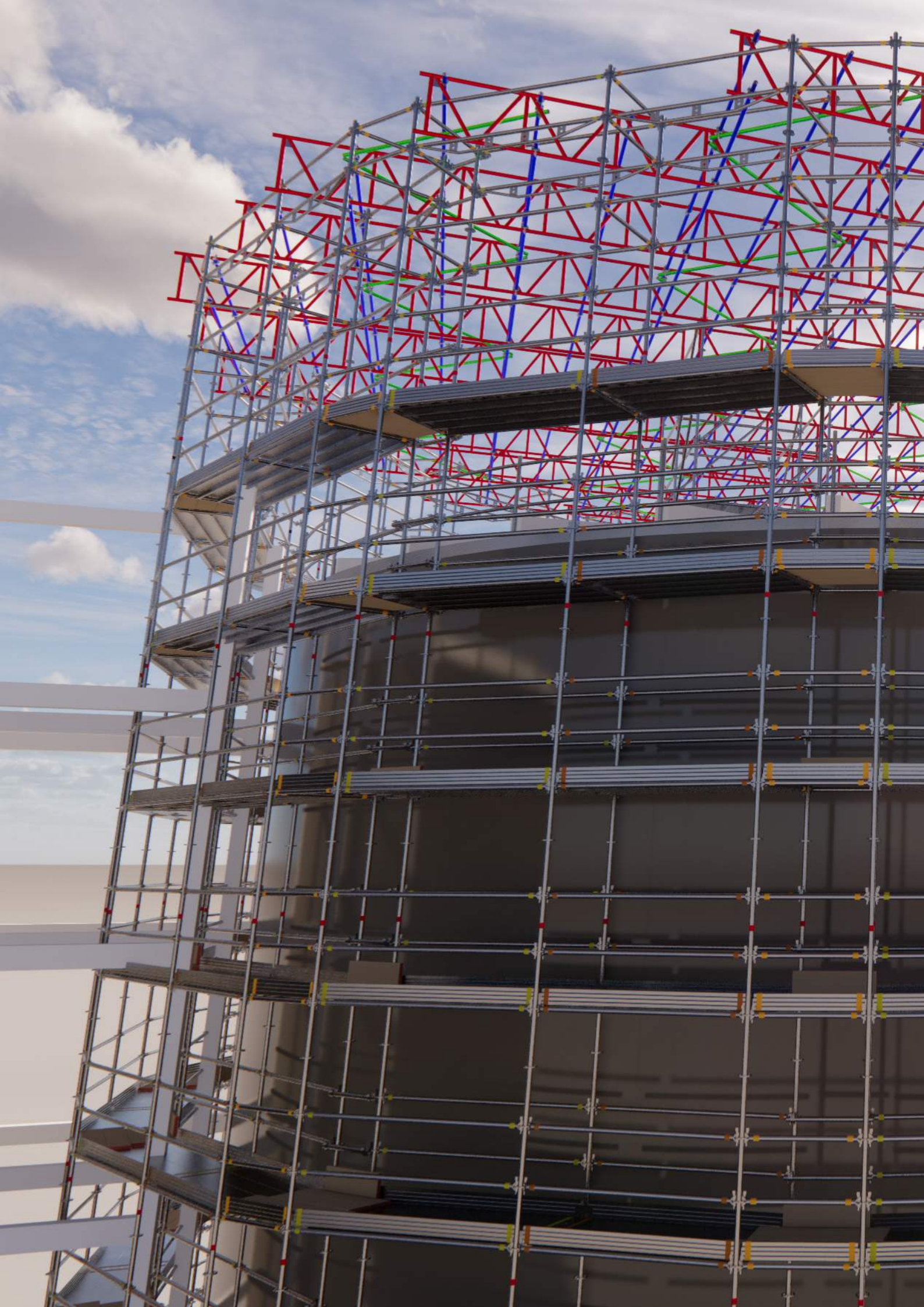


FORMWORK, SCAFFOLDING & SCREENS

ENGINEERING PROFILE



We help build Australia **smarter.**



About **Acrow Group of Companies**

Australian publicly listed entity, **Acrow Formwork and Construction Services Ltd (ASX:ACF)** is made up of three distinct organisations representing the proudly Australian **Acrow Group of Companies**.

Acrow Formwork and Scaffolding Pty Ltd is one of the largest formwork and scaffolding companies in Australia, offering innovative and cost-effective solutions to major residential, commercial, civil and industrial customers.

In 2018, Acrow recognised an opportunity for integrated business solutions and acquired specialist screen systems provider, **Natform Pty Ltd**. Natform are the leading designer and hirer of screen systems for the construction industry.

With synergies across both businesses and a window to broaden their range of specialised formwork and scaffolding systems, Acrow acquired **Uni-span Australia Pty Ltd** in 2019. Uni-span is the exclusive distributor of ULMA Formwork systems in Australia, providing formwork and scaffolding solutions, equipment and services, complemented by in-house engineering and industrial labour supply.

Together, the **Acrow Group of Companies** has over a century of experience in the Australian market.

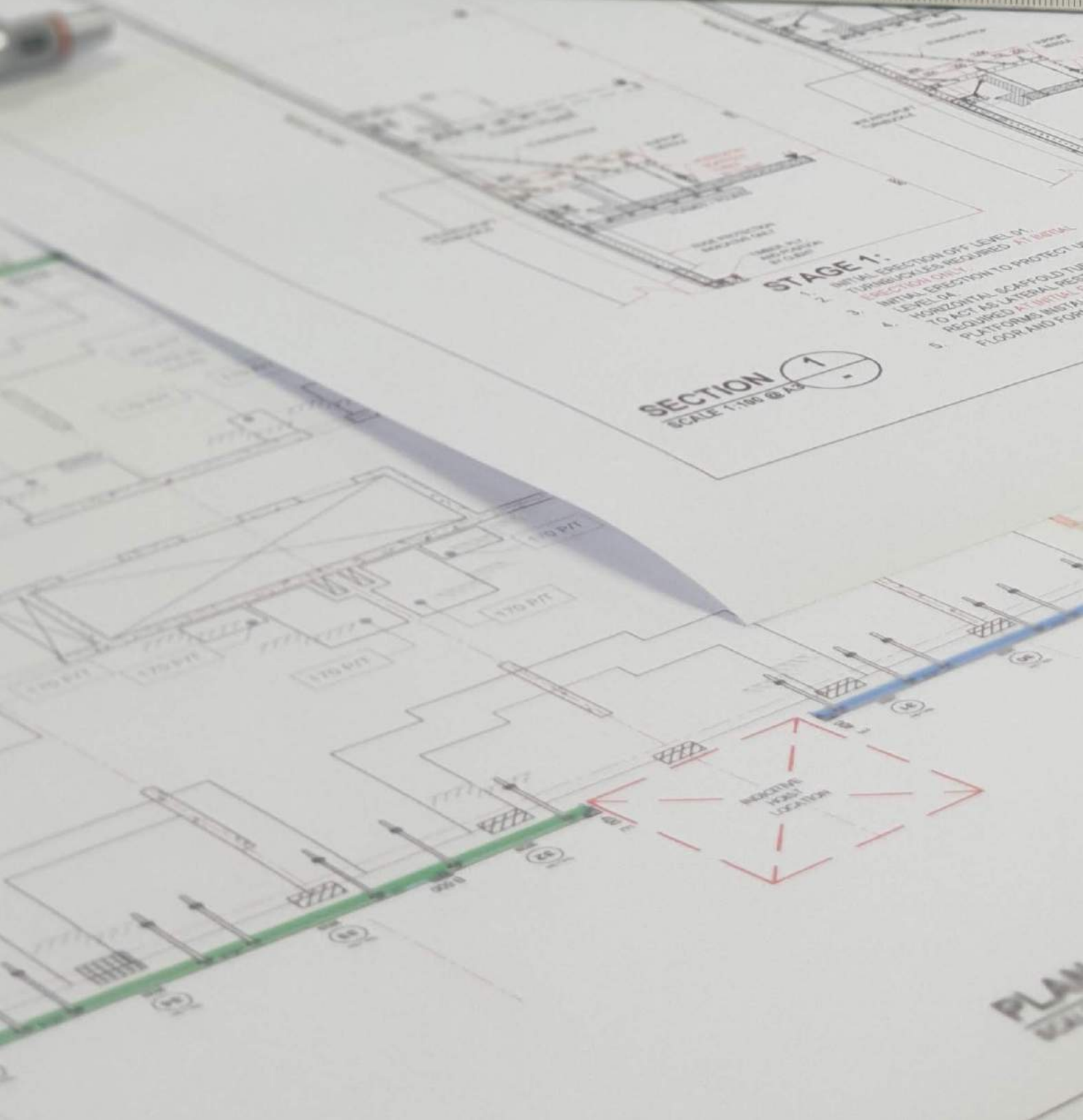
We operate in 10 locations across Australia, servicing the construction industry in the residential, commercial, civil and industrial sectors.

Our Branch network is made up of scaffolding, formwork and screen branches. With the strength and resources to attract the industry's best talent and a commitment to safety and outstanding service, we are a solution focused team, achieving the best outcome for our customers.



NATFORM





Engineering & Design

This is the heartbeat of our business.

Our objective is to offer innovative-engineered solutions, providing both safety and cost savings for our clients. This is why our engineering and design teams work closely with our clients before the project's inception.

By using practical solutions, supported by safe and economical design in line with Australian Standards, codes of practice and the relevant regulations, we can tailor a cost-effective solution for your project. Whether your project requirement is formwork, scaffolding or screen related, our diverse product range offers superior quality backed by renowned technical support and engineering expertise.

We have the largest dedicated temporary works design team in Australia, with design offices in Brisbane, Gold Coast, Sydney, Melbourne, and Perth.

Our technical capabilities provide a value added service in the form of 3D animation, which can assist in presenting technical solutions to your client in a very unique way. This animation can also serve as a training platform in Pre-starts and Toolbox sessions when discussing Scope of Works, Safe Work Method Statements and Risk Assessments. These animations can be viewed in video format or the 3D model can be placed into a virtual reality space for a immersive and realistic representation of what is being proposed. We also have a Technical Library within our website, containing product catalogues, technical guides and CAD block files for each system.



NATFORM





15 ENGINEERS



15 DRAFTS PEOPLE



5 CHARTERED ENGINEERS



200 DESIGNS PER MONTH



6000 MAN HOURS PER MONTH



200 YEARS EXPERIENCE

Our Engineering Team

MATT CAPORELLA
CHIEF OPERATING OFFICER

EVAN FIELD
NATIONAL ENGINEERING MANAGER

TEAM LEADERS

QLD/TAS

NSW

VIC

WA/SA

SCAFFOLD

**MAJOR
PROJECTS**

**SENIOR
ENGINEERS**

**PROJECT
ENGINEERS**

**SENIOR
DRAFTSPERSONS**

ENGINEERS

**GRADUATE
ENGINEERS**

DRAFTSPERSONS

**UNDERGRADUATE
ENGINEERS**



NATFORM



Resumes

MATTHEW CAPORELLA

CHIEF OPERATING OFFICER

✉ matthew.caporella@acrow.com.au

☎ 0401 895 864

in <https://au.linkedin.com/in/matthew-caporella-87953937>



QUALIFICATIONS

Bachelor of Engineering (Civil)
Bachelor of Business (Management)
CPEng
NER
RPEQ 21573
Member, Engineers Australia, MIEAust

EXPERIENCE

15 years

CAREER SUMMARY

Matthew joined Acrow in 2012 and is Chief Operating Officer for the business, having previously held the position of National Manager – Engineering.

Mr Caporella holds a Bachelor of Engineering (Civil) and Bachelor of Business (Management) from the Queensland University of Technology. He is a Chartered Professional Engineer with the Institute of Engineers Australia and a Registered Professional Engineer Queensland.

EVAN FIELD

NATIONAL MANAGER - ENGINEERING

✉ evan.field@acrow.com.au

☎ 0438 382 013

in <https://www.linkedin.com/in/evan-field-b46b45123/>



QUALIFICATIONS

Bachelor of Engineering (Civil and Environmental Management) - QUT
Master of Advanced Engineering (Structural Engineering Design) –
University of Southern Queensland
MIEAust
CPEng (Civil and Structural Colleges)
NER 2711789
RPEQ 12200 (Civil and Structural Disciplines)

EXPERIENCE

16 years

CAREER SUMMARY

Evan is a civil & structural engineer with experience in the design & construction of major civil infrastructure, mining infrastructure, urban development and residential building projects. Evan has advanced design skills in structural steel, reinforced concrete & temporary works. This is complemented by extensive design management, project management and contract administration skills gained from construction engineer roles.



NATFORM



Resumes

JEREMY TRICKETT

ENGINEERING TEAM LEADER - QLD/TAS

✉ jeremy.trickett@acrow.com.au

☎ 0401 895 920

🌐 <https://www.linkedin.com/in/jeremy-trickett-2645ba6a/>



QUALIFICATIONS

Bachelor of Engineering (Civil & Construction)
NER 4254016
RPEQ 21887
CPEng

EXPERIENCE

16 years

CAREER SUMMARY

Chartered Professional and RPEQ Engineer with more than sixteen years' experience in both formwork and scaffolding across the civil, industrial, mining, and residential sectors.

FREDERICK DAGANDAN
SENIOR DESIGN ENGINEER

✉ frederick.dagandan@acrow.com.au

☎ 0488 016 469

in <https://www.linkedin.com/in/frederick-dagandan-085021140/>



QUALIFICATIONS

Bachelor of Engineering - Civil (Honours) – University of Western Sydney '98

MIEAust 1458486, CPEng NER (Civil Engineering, Structural Engineering)

RPEQ 24710 (Civil Engineering, Structural Engineering)

EXPERIENCE

23+ years

CAREER SUMMARY

Fred is an experienced Civil Engineer with 23+ years of design and major project delivery experience in the Building, Construction and Industrial Services industries in Australia and New Zealand. Fred has a wide range of design experience through his years of working in multiple temporary works projects. He has a proven track record on design leadership to successfully deliver high risk and complex project requirements.



NATFORM



Resumes

NICK HOBBS

ENGINEERING TEAM LEADER - VIC

✉ nick.hobbs@acrow.com.au

☎ 0438 387689

in <https://www.linkedin.com/in/nicholasjhobbs>



QUALIFICATIONS

Associate Degree in Civil Engineering – Southbank Institute of Technology

Diploma of Computer Aided Drafting – Southbank Institute of Technology

Bachelor of Engineering (Civil and Structural Engineering) - QUT

Graduate Certificate of Advanced Engineering (Structural) –

University of Southern Queensland

MIEAust

RPEng (Structural)

RPEQ 23938 (Structural)

EXPERIENCE

9 years

CAREER SUMMARY

Structural engineer with over 9 years of experience in temporary works design with respect to civil, commercial and industrial construction sectors.

JAMES HAMMETT

ENGINEERING TEAM LEADER - SA/WA

✉ james.hammett@acrow.com.au

☎ 0401 896 665

in <https://www.linkedin.com/in/james-hammett-28b93863/>



QUALIFICATIONS

Bachelor of Engineering (Hons)

MEPR

CPEng

RPEQ 21368

NER

EXPERIENCE

15 years

CAREER SUMMARY

2006 – 2010; RMD – Designer & Regional Design Manager (QLD)

2010 – 2015; PERI – Designer, Design Manager (QLD), Sales, Senior Engineer – Major Projects

2015 – 2018; DOKA – Senior Project Engineer (QLD/ NT)

2018 – 2020; ADG – Senior Construction Services Engineer

2020 – current; Acrow – Team Leader SA/WA



NATFORM





Certificate of Compliance
INTEGRATED QUALITY CERTIFICATION PRIVATE LIMITED
hereby certifies that the Quality Management Systems of

Acrow Formwork & Construction Services Ltd.

159 Wellington Road, Clayton, VIC 3168

has been assessed and conforms to the
Quality Management Systems
ISO 9001:2015



Scope: Engineering and design of formwork and scaffolding.

Subdivision	: 69	Current issue date	: 31.03.2020
Class	: 6923	Current expiry date	: 30.03.2023
Process(es) not applicable	: None	1st Surveillance due	: 30.03.2021
Certificate number	: AUS/QMS/JAS-C0063/1213	2nd Surveillance due	: 30.03.2022
Attachment(s)	: None		




H. Narasimhaiah
Director

Certificate of compliance has an expiry period of 3 years from the current certification cycle start date but shall be considered as expired if the surveillance audit programme indicated in this certificate of compliance is not implemented to maintain confidence that the certified management system continues to fulfil requirements unless otherwise supported by a letter of continued compliance issued by the registered office of Integrated Quality Certification Pvt. Ltd. Certificate of compliance shall be updated in website/registry as suspended and/or withdrawn if the surveillance programme prior to the due date indicated above is not coordinated and implemented. Written information on any significant organizational changes with impact on the certificate of compliance shall be communicated to Integrated Quality Certification Pvt. Ltd prior to the planned audit schedule.

Corporate Office : Platinum City, G/13/03, Site # 02, Next to CMTI, HMT Road, Yeshwanthpur Post, Bangalore - 560 022, India.
Tel : +91(80) 41172752, 41277353, 41280347, Email : iqccorporate@iqcglobal.com Website : www.iqcglobal.com.
CIN : U74140KA2003PTC031851.

Australia Representative : 4, Bernard Street, Cheltenham, Victoria 3192.
Tel : +0061-425794659 E-mail : iqcaus@iqcglobal.com

Please visit www.iqcglobal.com and / or www.jas-anz.org to verify the authenticity and validity of this certificate of compliance
QF-13A Rev 00 date 04.12.2019

ISO 9001:2015

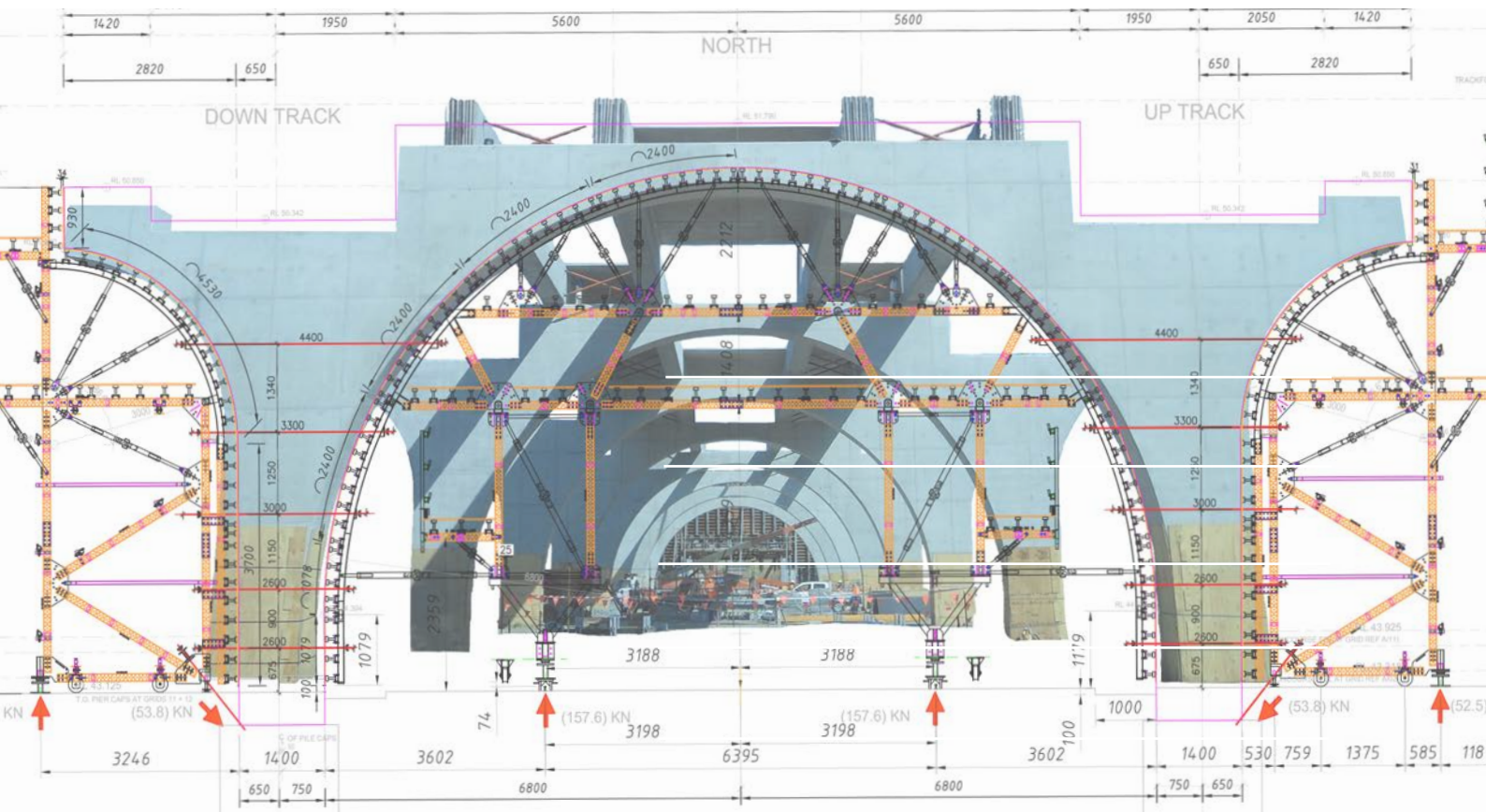
The Engineering and Design division of our business is ISO9001:2015 accredited.

Our team has thorough knowledge of the relevant regulatory requirements, codes of practice and Australian Standards, which enable us to advise our clients on design and compliance demands for their project needs.

Our objective is to offer innovative-engineered solutions, providing both safety and cost savings for our clients. This is why our engineering and design teams work closely with our clients before the project's inception.

By using practical solutions, supported by safe and economical design in line with Australian Standards, codes of practice and the relevant regulations, we can tailor a cost effective solution for your project.

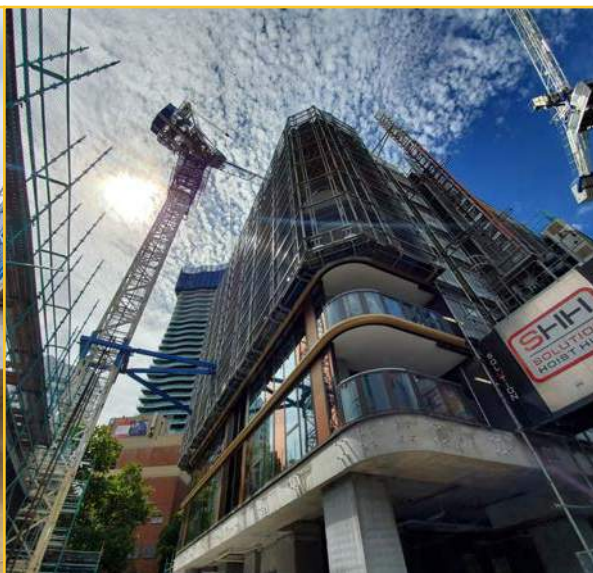
Whether your project requirement is formwork, scaffolding or screen related, our diverse product range offers superior quality backed by renowned technical support and engineering expertise.



NATFORM

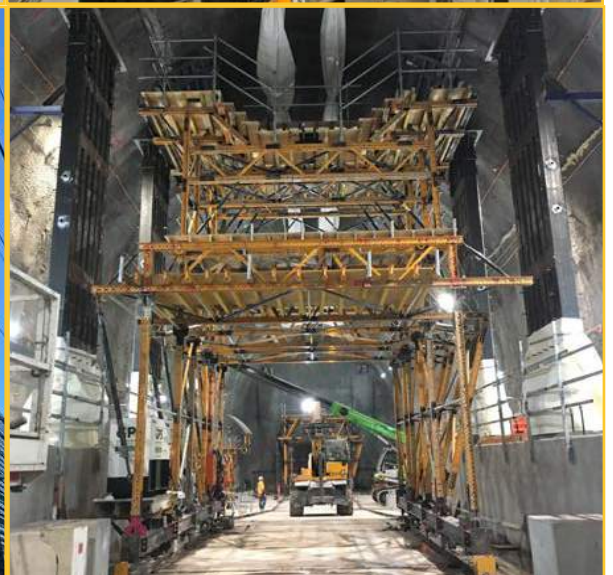


Project Gallery



ACROV
NATF
uni-span





We help build Australia **smarter.**



Contact

Phone: 1300 138 362

www.acrow.com.au