

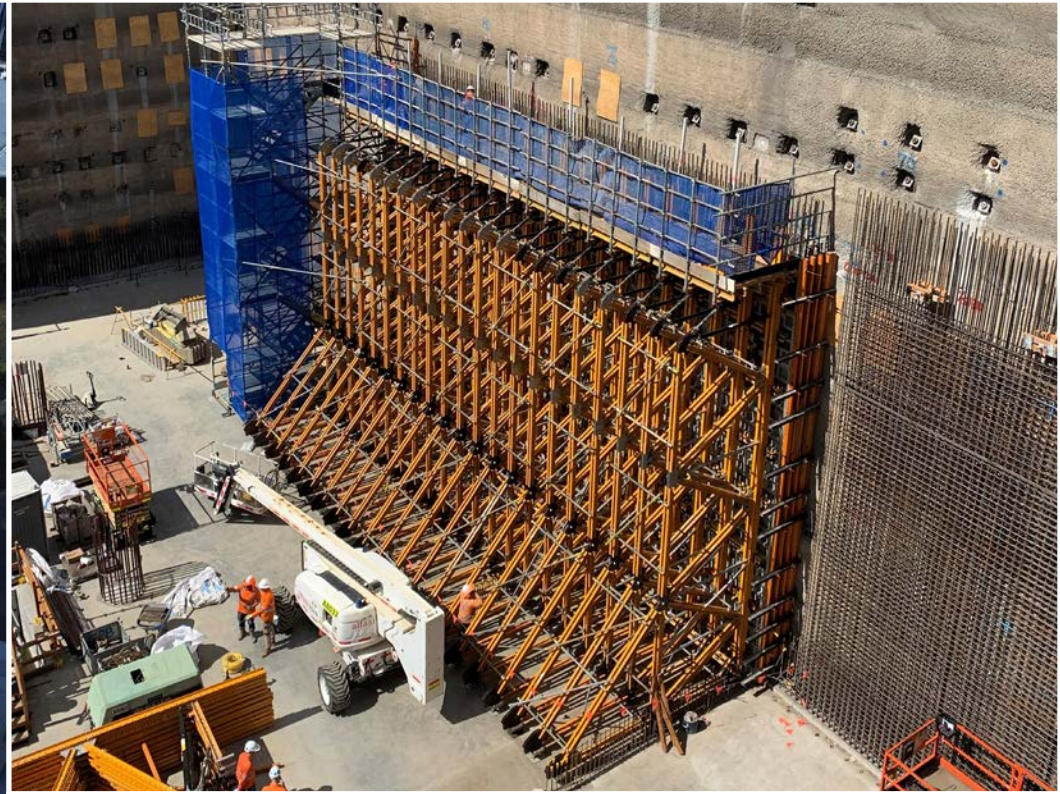


# CORPORATE PROFILE



Our **vision** is to set the national standard in engineered industrial and construction services.







Acrow Limited (ASX: ACF) is a leading provider of smart integrated construction systems across formwork, industrial services and commercial scaffolding in Australia. Enhancing our portfolio are falsework and shoring, screen solutions, Jacking Systems (also known as Jumpform), and internal engineering capabilities.

At Acrow, we are driven by a singular purpose – to elevate industry standards and empower our partners in the industrial and construction sectors to overcome obstacles and achieve unparalleled success.

As one of the nation's largest formwork and scaffolding companies, we specialise in delivering innovative, cost-effective solutions to a diverse portfolio of residential, commercial, civil, and industrial clients. We construct opportunities for growth and progress.

In 2018, our visionary approach led us to acquire Natform Pty Ltd, a renowned specialist in screen systems. Natform has carved a niche as the industry's foremost designer and provider of screen systems, adding a new dimension to our suite of services. Together, we ensure construction sites are not only secure but also conducive to efficient work.

Building on synergies within our operations and recognising a broader scope for specialised formwork and scaffolding systems, Acrow welcomed Uni-span Australia Pty Ltd into its fold in 2019. Uni-span brings a comprehensive array of formwork and scaffolding solutions, equipment, and services, complemented by in-house engineering expertise and a reliable industrial labour supply.

The acquisition of Heinrich's Ishebeck Formwork Panel System in May 2023 further cements Acrow's standing as a prominent provider of construction solutions, showcasing its commitment to strategic investments that drive growth and enhance market position. Additionally, the integration of MI Scaffold (MIS) in November 2023 and Benchmark Scaffolding in March 2024, enhances Acrow's capabilities in scaffolding, rigging, and access solutions, particularly in the North and Central and South East Queensland markets. These acquisitions seamlessly align with Acrow's existing portfolio of specialised industrial services and engineering solutions across Australia, positioning the company for continued success and market leadership.

Together, we offer a complete spectrum of support for your projects, from inception to completion.

Acrow boasts a rich legacy of over a century of experience in the Australian market. We've witnessed the evolution of our industry and have consistently pushed boundaries, adapting to changing times while upholding our commitment to quality, safety, and innovation.



## Acrow's Heritage

Acrow's heritage dates back to 1936, when the company was first launched in the UK. The Acrow business has been active in the Australian construction industry since 1950.

Acrow Formwork and Scaffolding Pty Ltd became an Australian publicly listed entity in April 2018.



### **Natform's Heritage**

Natform was founded in 1989 by Margaret Prokop, who was the pioneer of the screen system, developing the concept herself and putting the system through multiple design iterations as it was deployed and tested on sites during the early 1990's.

### **Uni-span's Heritage**

Australian owned and operated, Uni-span was a privately owned company, having commenced scaffolding operations in 2002. In 2009, Uni-span introduced a formwork product range. Their solutions, equipment and services were complemented by in-house engineering and industrial labour supply.

# Local knowledge. National

Acrow spans 13 strategic locations across Australia, collectively dedicated to serving the construction industry in residential, commercial, civil, and industrial sectors.

Within our extensive branch network, we unite Scaffolding, Formwork, Jacking Systems and Screen branches under one banner.

Powered by our robust resources and the ability to attract top industry talent, we are a solution-driven team passionately committed to safety and delivering exceptional service. Our relentless focus on achieving optimal outcomes defines us, consistently exceeding the expectations of our valued customers.



# nal network.



## Acrow Quick Facts

- Owns over 60,000 tonnes of formwork and scaffolding products
- Supply Cuplok, Supercuplok, Quickstage and Ringlock scaffolding systems & accessories.
- Owns over 80,000m<sup>2</sup> of Acrow safety screen systems with sizes varying from 0.8m to 13m high
- Home of the original Acrow prop
- Patent and trademark owner of the original Uni-mesh<sup>TM</sup> scaffolding containment system (now fire retardant)
- Over 100 years experience shared amongst our in-house design and engineering teams
- Our Design division is ISO9001:2015 accredited.
- We employ:
  - 50+ Engineering & design staff
  - 16+ Senior Management
  - 40+ Project managers & sales experts
  - 70+ National support staff
  - 60+ Finance & admin staff
  - 160+ Scaffolders
- Extensive experience in the Industrial sector, supporting major oil, gas and mining companies with on-site labour and scaffold supply.
- Our industrial division is ISO9001:2015, ISO45001:2018 & ISO14001:2015 accredited

**Raising the Standard.**





## Smart

- Open to change
- Embrace new ideas
- Sharing best practice
- Set industry standards
- Continuous improvement
- Proactive approach
- Solution focused



## Can-do

- Safety first
- Can be trusted to deliver what was promised
- We are determined
- We are open, honest & always constructive
- We strive to be the best



## Partners

- Our customers are at the heart of everything we do
- We are confident in ourselves and others
- We are always happy to help each other out
- We are one team







# Our Culture & Values







# Acrow strategy



Be recognised  
as the leading  
Engineered  
**Formwork**  
**Sales & Hire**  
**Equipment**  
**Solutions**  
provider in  
Australia.



Be recognised  
as the leading  
Engineered  
Scaffold  
Solutions  
provider to  
the Australian  
Industrial  
Scaffold  
market.



Recruit, train  
and retain  
the best  
management  
and  
engineering  
**Talent**  
to drive the  
business.



**Organic  
Growth**  
opportunities  
across States,  
cross-sell and  
introduce new  
products.



Our in-house  
**Engineering and HSEQ**  
teams provide value  
added services and  
professional systems  
for safety and project  
management.



## Engineering and innovation

This is the heart beat of our business.

We have the largest dedicated temporary works design team in Australia, with design offices in Brisbane, Gold Coast, Sydney, Melbourne and Perth.

Our professional in-house engineering team, including Chartered Engineers, are suitably qualified and highly experienced with an exceptional reputation in the formwork, falsework, shoring, scaffolding, jacking systems and screen industry.

This division of our business is ISO9001:2015 accredited.

Complementing this experience is the team's thorough knowledge of the relevant regulatory requirements, codes of practice and Australian Standards, which enable us to advise our clients on design and compliance demands for their project needs.

We offer practical, economical, safe, compliant and innovative-engineered solutions.

Our team takes *"thinking out the box"* to a new level.

## Design and Technical support

Our objective is to offer innovative-engineered solutions, providing both safety and cost savings for our clients. This is why our engineering and design teams work closely with our clients before the project's inception.

By using practical solutions, supported by safe and economical design in line with Australian Standards, codes of practice and the relevant regulations, we can tailor a cost effective solution for your project.

Whether your project requirement is formwork, scaffolding, jacking systems or screen related, our diverse product range offers superior quality backed by renowned technical support and engineering expertise.

## Quality assurance and control

Our internal quality management system and processes are supported by the group's Quality Assurance Plan, conforming to the ISO 9001:2015 framework.

This framework guides our processes and procedures in selecting and managing our suppliers and manufacturers.

From design to production to delivery, not a step is missed in the quality control process, ensuring compliance with our requirements.

Stringent quality control measures are part of our everyday business, allowing us to offer our clients reliable products that meet standards and exceed our clients' expectations.

**R a i s i n g   t h e   S t a n d a r d .**

Acrow partners  
with industrial  
and construction  
professionals to  
remove their  
barriers to success.





## Acrow Formwork

Acrow has **the largest and most versatile formwork equipment range** in Australia.

With dedicated formwork branches across Australia, we have highly experienced in-house engineering teams, with over 100 combined years of experience. These teams have delivered industry recognisable formwork solutions for walls and columns, climbing, slabs, props and shoring, bridges and tunnels in many major construction projects spanning Australia.

Our strategic advantage is simple, yet fundamental to our clients in achieving their required project outcomes.

The Acrow has the largest and most versatile range of products, complemented by a customer service focused approach and engineering expertise to meet the most challenging project demands.

## Acrow Scaffolding

As one of Australia's leading suppliers of access scaffolding systems including Ringlock, Cuplok, Quickstage, SuperCuplok and Tube & Clip, with it's flexibility as a scaffold and/or falsework system across both civil and commercial sectors, Acrow offerings also includes the patented Uni-mesh™ (fire retardant) scaffolding containment system to their product range.

We provide an efficient and safe installation and dismantle service via our team of highly experienced project managers and comprehensive network of scaffolders.

Acrow's national footprint allows us full coverage and opportunities for local engagement. We recognise Australia as a nation rich in heritage and significant indigenous culture and seek to increase indigenous employment, retention rates and career progression. We offer both dry and wet hire, including design, certification, installation/dismantle and transport. Our scaffolding product range can also be purchased outright.

## Acrow Screens

Previously known as Natform safety screen systems, Acrow screens and edge protection solutions have become renowned in the industry since 1989.

Large developers and constructors recognise the site efficiencies from using screen systems. This is occurring more than ever before, particularly in low rise buildings.

Acrow's highly skilled staff continually deliver design solutions to satisfy the demands of the diverse construction industry. Through this experience, the screen engineering team have a true understanding and knowledge of the relationship between the site structure, finishing works, and screen systems.

Maintenance of new designs and engineering standards allows larger construction companies to benefit from the inherent advantages of screen systems.

## Acrow Jacking Systems

Jacking Systems (aka Jumpform) stand as a critical component in the construction of multi-level projects. Acrow's entry into this market further reinforces our position as the premier provider of Engineered Formwork Sales and Hire solutions within the Australian construction industry.

Acrow have a 10-year exclusive licensing agreement in Australia with New Zealand's Jacking Systems, whose proprietary system ranks among the most technologically advanced, reusable, and adaptable Jacking Systems available in the Australian market.

These systems seamlessly complement our existing array of formwork and screen systems, enhancing utilisation and revenue opportunities across our fleet. The amalgamation of our industry-leading engineering expertise with Jacking Systems' cutting-edge technology presents a compelling proposition to potential clients as we aim to establish a national presence in this market.

## Acrow Industrial Services

This business division has a strong focus on the industrial, oil, gas and mining sectors, concentrating on the supply of permanent, contract and interim personnel. We believe a high quality individual; with the appropriate skill set and cultural alignment ensures the making of a good employee and more importantly a strong team member.

We source staff from across Australasia with a strong focus on Local Industry Participation (local suppliers, cross-skilled local and indigenous workforce).

Acrow's integrity is apparent in our dedication to safety, the environment and in the quality we deliver. Our Industrial division is ISO9001:2015, ISO45001:2018 and ISO14001:2015 accredited.

We develop and maintain loyal relationships with our customers, which is indicative of the service we provide.

Our highly experienced team sets us apart from our competitors.

Acrow trusts its employees who have the capacity, commitment, passion and versatility to achieve outstanding outcomes for you.

We provide labour teams for short, long term contracts or permanent placements.

Such scopes of work include commissioning, decommissioning, increases in project demands, shut-downs and maintenance crews.

The supply of skilled labour is complemented by our scaffolding, formwork and screen solutions.

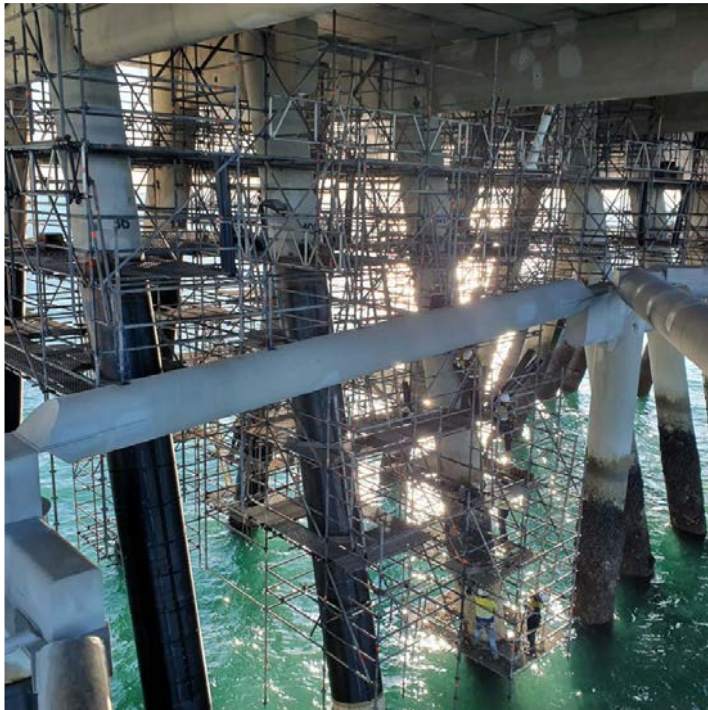
## Acrow Local & Indigenous Participation

Aboriginal and Torres Strait Islander Engagement and Participation Management Plan forms part of every project and addresses the overall management of the project including:

- the systems and methodologies we employ to ensure compliance with the Indigenous Peoples Participation requirements of each contract,
- the project management approach specific to regions,
- Acrow's indigenous training, employment and engagement approach
- industrial relations strategy and risk management; and
- the interfaces between Acrow's Project Management Plan and the processes and responsibility for management of these.

As a business, Acrow values diversity and understands initiatives are integral to ongoing success. As part of this commitment, Acrow are looking to strengthen ties with the indigenous community by providing fulfilling careers and opportunities for indigenous people across the country.





## Acrow locations

### NEW SOUTH WALES

#### National Head Office Formwork & Scaffold

2a Mavis Street  
Revesby NSW 2212  
P: 02 9780 6500  
F: 02 9780 6499  
E: [info@acrow.com.au](mailto:info@acrow.com.au)

#### Screens Head Office

13-15 Vallance Street  
St Marys NSW 2760  
P: 02 9219 1566

### QUEENSLAND

#### Formwork & Scaffold

280 Bilsen Road  
Geebung QLD 4034  
P: 07 3265 2266  
F: 07 3865 0277

#### Screens & Formwork

2 Morrison Lane  
Beenleigh QLD 4207  
P: 07 3807 9800

#### Industrial Scaffold

22a Spanns Road  
Beenleigh QLD 4207  
P: 07 3442 4000

### SOUTH AUSTRALIA

#### Formwork & Scaffold

26 Circuit Drive  
Hendon SA 5014  
P: 08 8359 9700  
F: 08 8359 1366

### TASMANIA

#### Formwork & Scaffold

93 Lampton Avenue  
Moonah TAS 7009  
P: 03 6277 1212  
F: 03 6277 1290

#### Formwork & Scaffold

65 Boland Street  
Launceston TAS 7250  
P: 03 6324 8282  
F: 03 6324 8250

### VICTORIA

#### Formwork, Scaffold & Screens

1651 - 1657 Centre Road  
Springvale VIC 3171  
P: 03 9582 2777  
F: 03 9582 2790

### WESTERN AUSTRALIA

#### Formwork & Scaffold

11 Jackson Street  
Bassendean WA 6054  
P: 08 9373 7200  
F: 08 9379 3488







**acrow.**

ENGINEERING & CONSTRUCTION

Raising the **Standard.**

**Contact**

Phone: 1300 138 362

[www.acrow.com.au](http://www.acrow.com.au)