

CC-4

Aluminium Slab Formwork



// Light, safe, highly efficient and excellent concrete finish



// Table of content

Features	2
Benefits	5
Solutions	8
Basic components	11



// Features

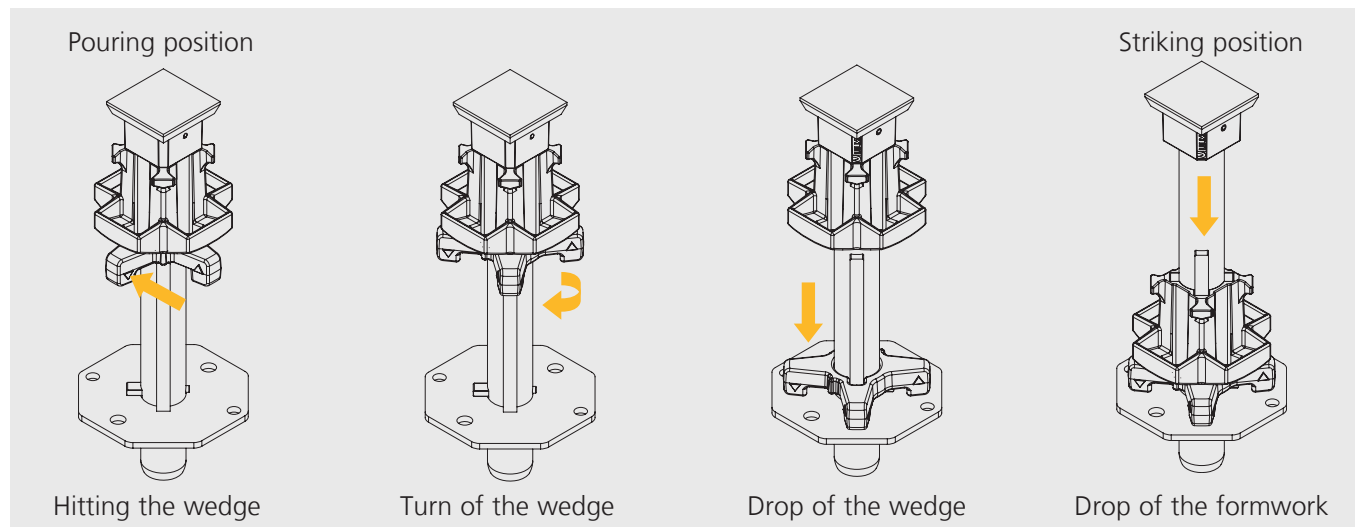
Recoverable formwork system for solid and lightened slabs ensuring **high quality finish**.

Quick erection and dismantling due to aluminium structure and fast striking system and complying with **highest safety standards** for the worker.

Safe stripping due to drop-down system to lower the formwork (drop distance 15 cm).



► Sequence of drophead for striking

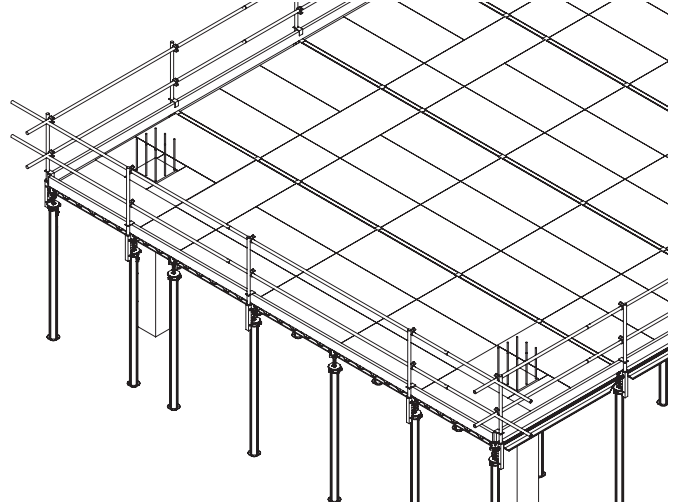


Different assembly types: with panel (aluminium frame with incorporated board) or with standard plywood.





CC-4 PANEL SYSTEM



Perfect for **large slabs in building construction**, with regular geometry and spans between columns, and high demands for **finishing quality**.

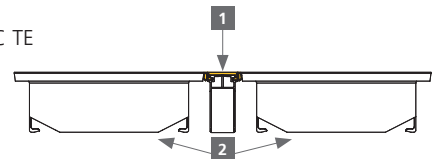
Consisting of Dropheads CC, Beams CC, Transversals CC TE and Panels CC; panels make up the biggest part of the form face.

With the basic grid 2.32 m x 1.5 m, a **prop rate of 0.29 props/m² can be achieved**.

Excellent concrete finishing: watertight joints between panels that inhibit concrete leaking.

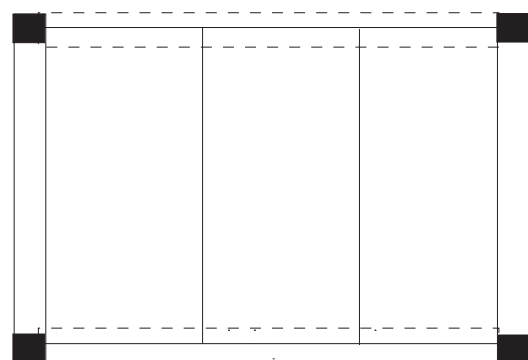
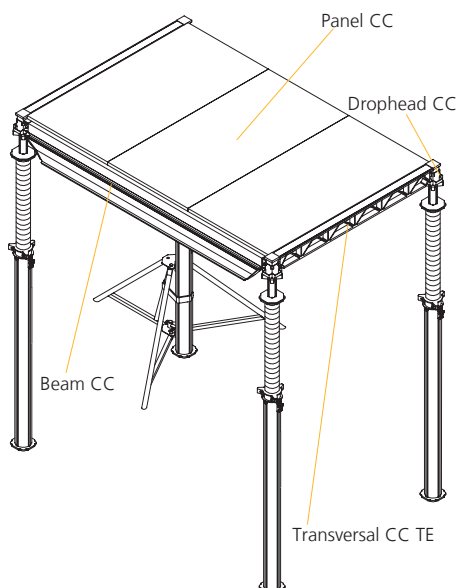
1 Transversal CC TE

2 Panels



► CC-4 Panel system properties:

Customised grid sizes can be configured by combining beams and transversals .



CC-4 Panel system basic grid

► Maximum slab thickness

Grid (m)	Maximum slab thickness (cm)
2.32 x 1.5	40
1.57 x 1.5	60
2.32 x 0.75	90
1.57 x 0.75	90



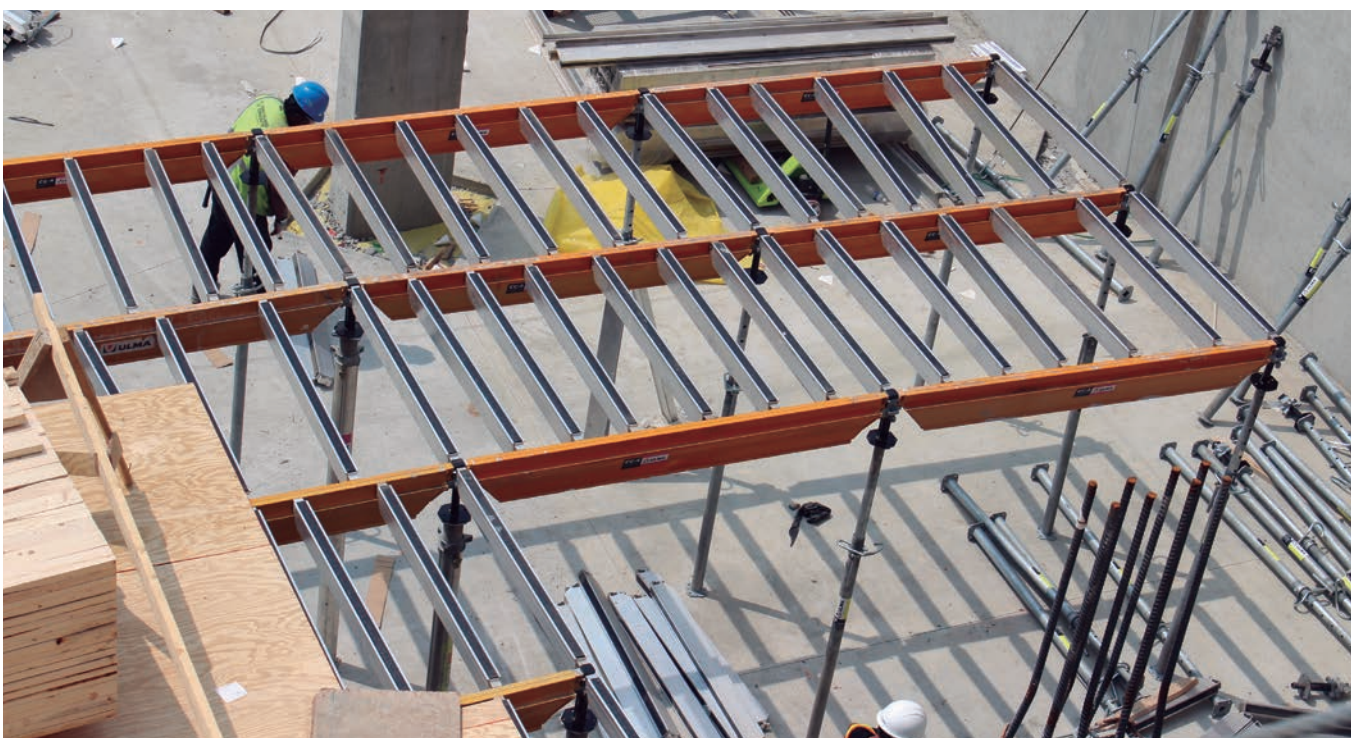
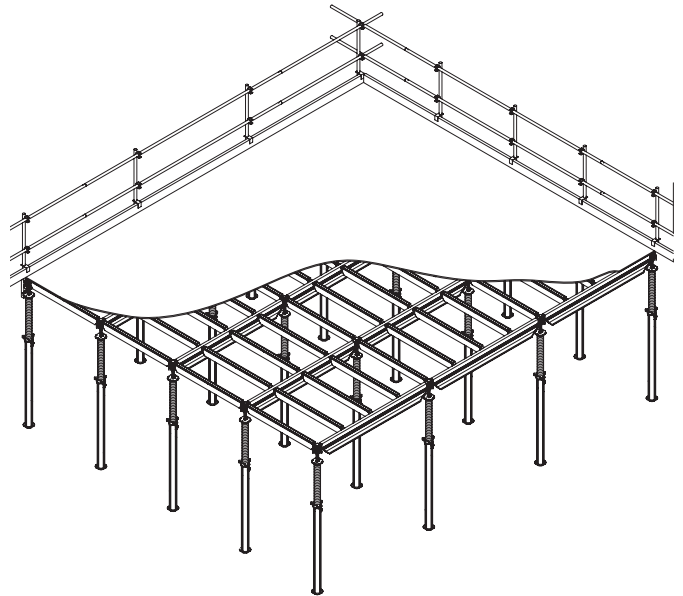
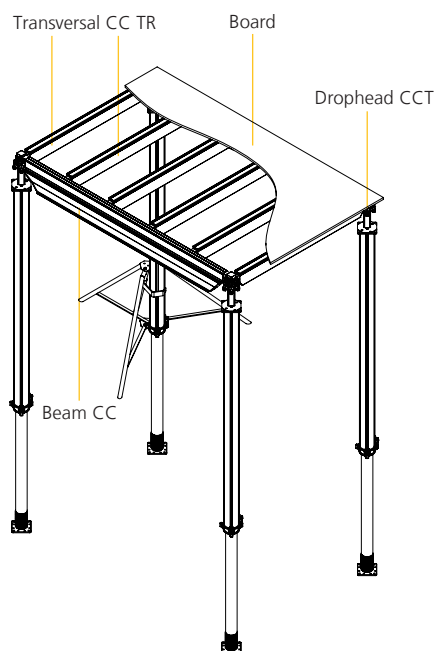
CC-4 PLY SYSTEM

Designed for **any slab geometry** and high demands on **finishing quality**.

Form face: grid of Dropheads CCT, Beams CC, Transversals CC TR and plywood.

The dropheads allow recovering beams, transversals and plywood.

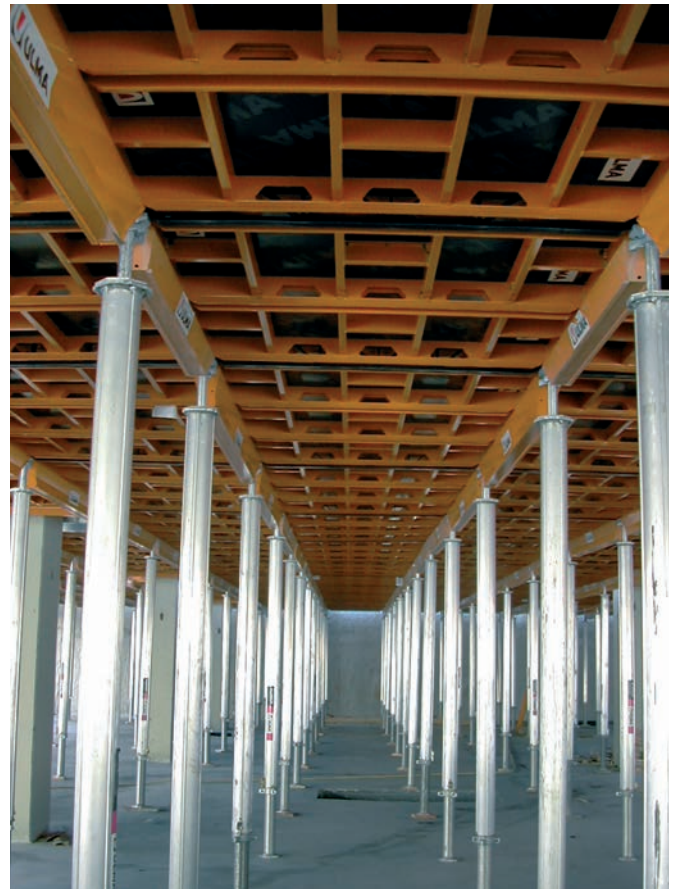
Great **flexibility**.





// Benefits

- ▶ **Lightness:** High assembly efficiency.
- ▶ The form face provides **superior concrete finishing**.
- ▶ Stripping and **material retrieval without the risk of falls:** highest worker's protection.
- ▶ **Formwork recoverable** in 3 days, only the props with Dropheads CC remain as load-bearing items.
- ▶ It allows the **assembly of the grid previously** to the placing of panels or plywood.
- ▶ **Great versatility:** it allows a **change in beam direction**, 90° assembly possible.
- ▶ Slabs of up to **90 cm thickness**, depending on grid size in use.
- ▶ **Efficient** solutions for infills at columns and walls, perimeter protection and safety.
- ▶ **Safe panel assembly** from below, from a single position, several grids are completed by sliding the panels into place.
- ▶ There are **pallets** for shipping and transport on site of beams and panels available.



▶ Recoverable structure



▶ Remaining structure



► High assembly efficiency for large slabs



► Striking with drophead



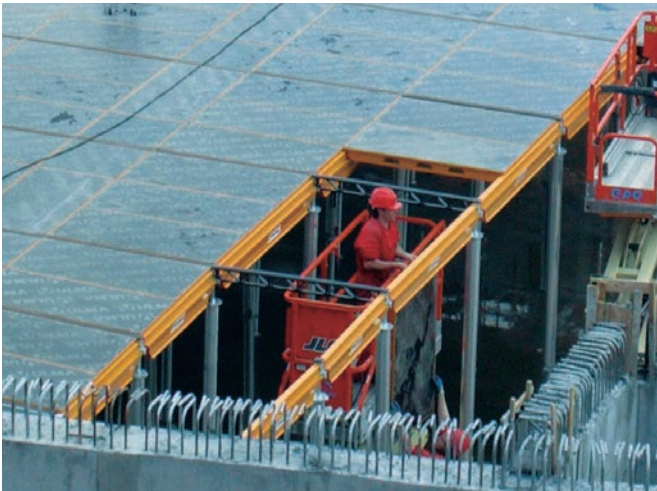
► Change of beam direction



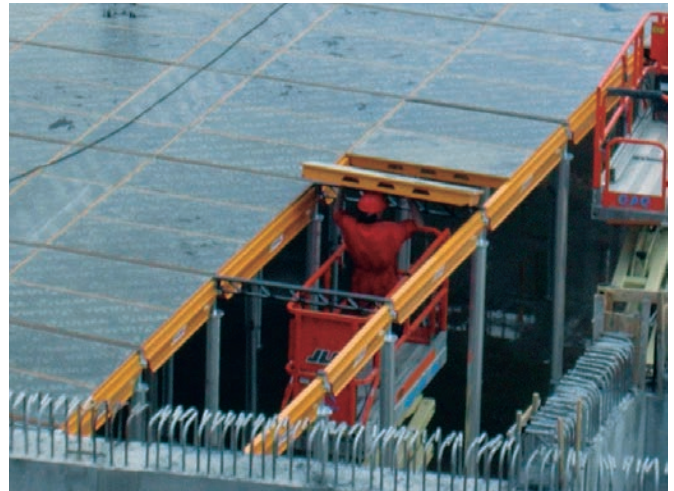
► Grid structure erection



► Several teams for the assembly of grids and panels can work at once



► Safe panel assembly from below



► Pallet for beams easing their transport



► Pallets for panels



► Safe dismantling



► Shuttering face with phenolic plywood or composite board



// Solutions

► 90° Assembly

Change of formwork direction optimises its distribution and eases infills.



► 90° assembly of beam on beam



► Easy assembly by sliding the panels into place

► Infills at columns

CC-4 offers many possibilities for the support of plywood in infill areas.



► Infill at column in the CC-4 Ply system



► Infill at column in the CC-4 Panel system

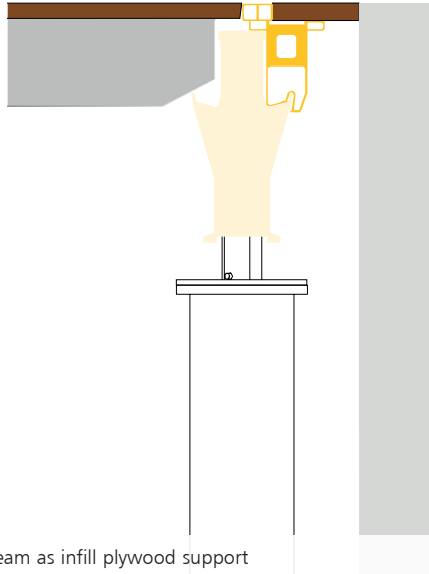


► Solutions between walls

Wide variety starting-from-a-wall and infills at walls solutions in both formwork directions.



► Infills at walls with edge beam as infill plywood support



► Starting-from-a-wall with panel at the edge



► Infill at wall in the CC-4 Ply system



► Beams VM on props that provide support for the infill plywood



► **Perimeter formwork**

It eases the lateral forming of the slab, the placing of the stop-end and provides a perimeter working area.



► **Perimeter protection**

Complete safety with handrails easily installed at the perimeter and at voids.



► **Column heads**



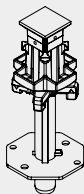
► **Lightened slab**



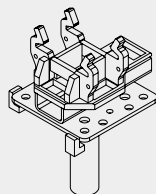


Basic components

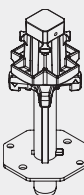
Drophead CC	1870060	4.9



Universal head CC	1870500	3.7
-------------------	---------	-----

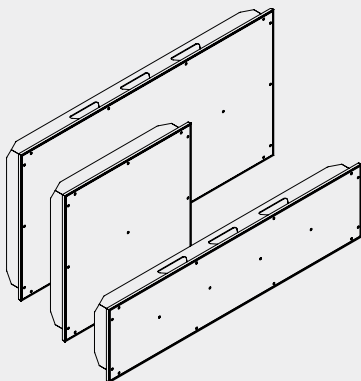


Drophead CCT	1870155	4.6
--------------	---------	-----

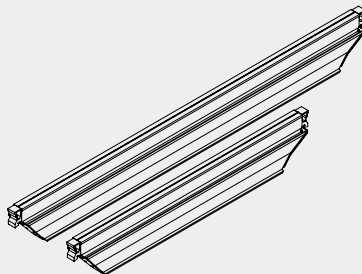


Panel CC 1.5x0.75	1870090	15.4
Panel CC 1.5x0.375	1870165	9.1
Panel CC 0.75x0.75	1870096	8.3
Panel CC 0.75x0.375	1870265	4.7

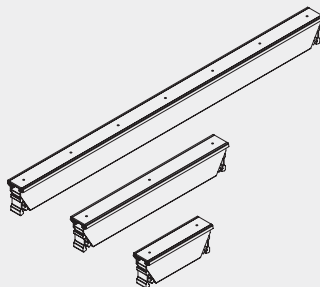
Panel CC 1.5x0.75 EVERMAX	1870290	15.4
Panel CC 0.75x0.75 EVERMAX	1870296	8.3
Panel CC 1.5x0.375 EVERMAX	1870365	9.1
Panel CC 0.75x0.375 EVERMAX	1870565	4.7



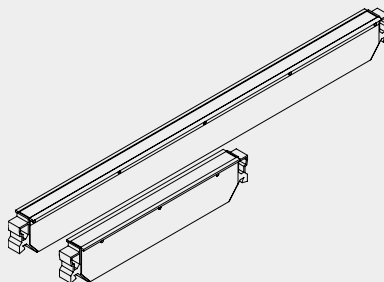
Beam CC 2.32	1870029	16
Beam CC 1.57	1870031	10.6



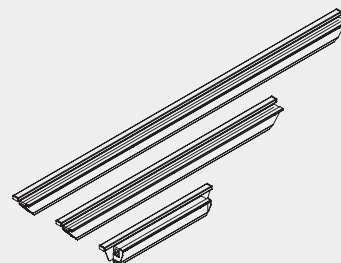
Transversal CC TE 1.5 ALU	1870400	5.3
Transversal CC TE 0.75 ALU	1870405	2.7
Transversal CC TE 0.375 ALU	1870407	1.4



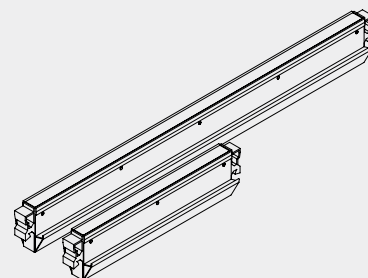
Transversal CC TR 2.075	1870225	8.7
Transversal CC TR 1.5	1870045	6.3
Transversal CC TR 0.75	1870050	3.2



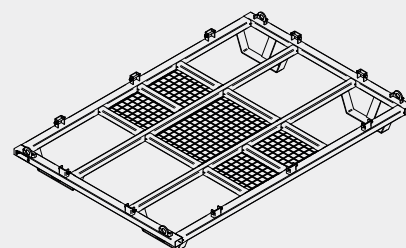
Edge beam 2.32	1870464	8.9
Edge beam 1.57	1870465	5.7
Edge beam 0.82	1870466	2.7



Beam CC W 2.075	1870230	12.4
Beam CC W 1.5	1870105	8.9
Beam CC W 0.75	1870150	4.4
Beam CC W 0.375	1870375	2.1

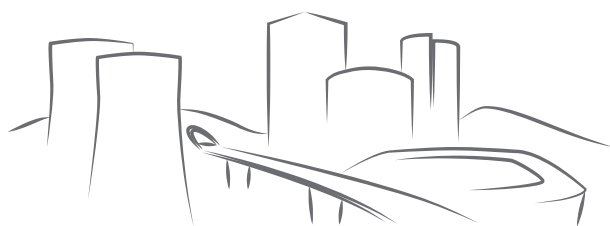


Maxi pallet CC panels	1870300	79
-----------------------	---------	----



Steel Sling Maxi Pallet	1870285	1.8
-------------------------	---------	-----





From the beginning of your projects



ULMA C y E, S. Coop.

Ps. Otadui, 3 - P.O. 13

20560 Oñati, Spain

T. +34 943 034 900

F. +34 943 034 920

04D103ENM

►► www.ulmaconstruction.com

IMPORTANT:

Any safety provisions as directed by the appropriate governing agencies must be observed when using our products. The pictures in this document are snapshots of situations at different stages of assembly, and therefore are not complete images. For the purpose of safety, they should not be deemed as definitive. All of the indications regarding safety and operations contained in this document, and the data on stress and loads should be respected. ULMA's Technical Department must be consulted anytime that field changes alter our equipment installation drawings. The loads featured in this document, related to the basic elements of the product, are approximate. Our equipment is designed to work with accessories and elements made by our company only. Combining such equipment with other systems is not only

dangerous but also voids any or all our warranties. The company reserves the right to introduce any modifications deemed necessary for the technical development of the product.

All rights reserved. Neither all nor part of this document may be reproduced or transmitted in any way by any electronic or mechanical procedure, including photocopy, magnetic recording or any other form of information storage or retrieval system without the written permission.

© Copyright by ULMA C y E, S. Coop