

FORMWORK GENERAL
PRODUCT GUIDE

Acrow Aluminium **GASS Prop**

General Product Information



Genuine **Safety.**
Outstanding Service.



ACROW Aluminium GASS Prop

The Aluminium GASS Prop is a versatile aluminium prop that is easy to erect in two simple steps and is able to be handled by a single person ensuring a reliable and economical formwork system.

The Acrow Aluminium GASS Prop is manufactured using high strength aluminium with leg loads up to 130kN unbraced which permits versatility across multiple uses including falsework support and backpropping.

Important

The safe use and application of the Acrow Aluminium GASS Prop system must be in accordance with Australian Standard AS 3610 Formwork for Concrete, Occupational Health and Safety Regulations, approved industry codes of practice and relevant regulatory authority requirements.

Any illustrations in the assembly configurations are minimum guidelines only.

The combined use of the Acrow Aluminium GASS Prop system with equipment from other suppliers may entail performance problems and therefore requires a design check and/or verification by AF&S Engineering Department.

Acrow can provide appropriate safe work method statement for assembly and dismantling of the Acrow Aluminium GASS Prop system to suit the specific design and project. Contact Acrow for such information.

Safety Warning

This warning is to draw the users attention to possible musculoskeletal disorder as a result of manual handling during assembly and dismantling of Acrow Aluminium GASS Prop components. It is recommended that users of the Acrow Aluminium GASS Prop system employ and implement appropriate procedures and control measures to eliminate or control any risk of Musculoskeletal disorder/injury while manually handling Acrow Aluminium GASS Prop components. Refer to Code of Practice on manual handling published by local Workcover Authority or other approved and recognised guidelines for correct and appropriate manual handling procedures.

Product Features

Acrow Aluminium GASS Prop Aluminium Shoring System is a lightweight shoring system that provides a fast, efficient and versatile falsework structure with the benefit of providing load capacity up to 130kN. The primary product attributes of Acrow Aluminium GASS Prop are:

- Provision of load capacity up to 130kN
- Light weight and easy to erect

In addition the high strength light weight Acrow Aluminium GASS Prop system is easy to erect and dismantle leading to significant labour savings on site.



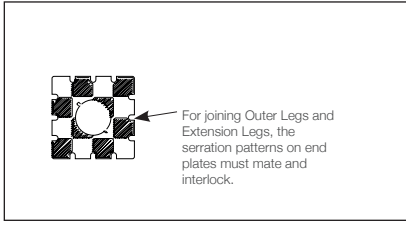
- 1 Photographs/illustrations shown within this brochure are intended as expressing the diversity and possible applications of the product and as such must not be used as assembly instructions.
- 2 In line with Acrow Formwork & Scaffolding Pty Ltd's commitment to continuous product development and improvement, the information contained in this brochure may be changed without notice.
- 3 Every effort has been made to give appropriate guidelines for the use of this product, however, Acrow Formwork & Scaffolding Pty Ltd accepts no responsibility for any loss or damage suffered by any person acting or refraining from action as a result of this information.

Should the users require any further information or guidance, they are encouraged to contact their local Acrow Formwork & Scaffolding Pty Ltd outlet.

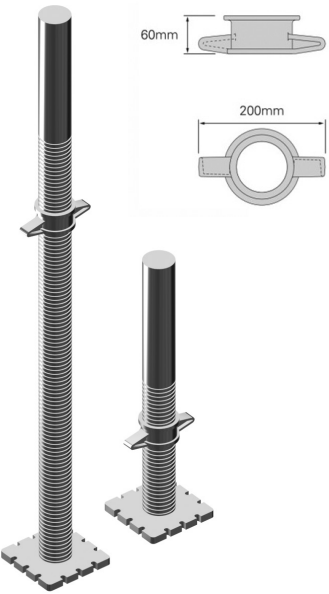
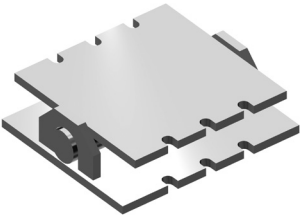
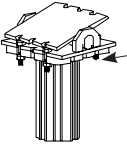

GASS is SGB Harsco product distributed by Acrow Formwork & Scaffolding under Acrow Aluminium GASS Prop.

General Product Information

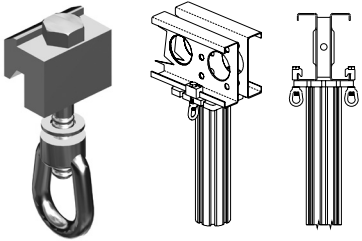
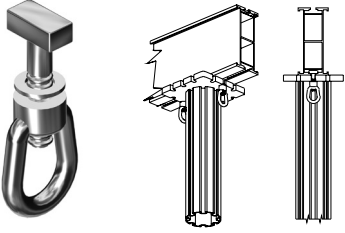
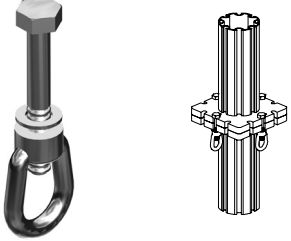
Product	Description	Code No.	Mass kg (nom.)
	<p>Acrow Aluminium GASS Prop Outer Legs</p> <p>The Outer Leg extrusion has eight slots which allows attachment of Bracing Frames in multiple directions. The end plates have interlocking features that eliminates eccentricity. The spring loaded latch at the bottom of the Outer Leg provides means of securing the Inner leg to Outer.</p> <p>Outer Leg 4670 Outer Leg 3580 Outer Leg 2490 Outer Leg 1400</p>	<p>GHOUT467 GHOUT358 GHOUT249 GHOUT140</p>	<p>22.1 17.4 12.7 8.0</p>
	<p>Acrow Aluminium GASS Prop Extension Legs</p> <p>Extension Legs allow to extend the height of the legs. Where used the serration's on the edges of the end plates must match each other.</p> <p>Extension Leg 4670 Extension Leg 3580 Extension Leg 2490 Extension Leg 1400 Extension Leg 500</p>	<p>GHEXT467 GHEXT358 GHEXT249 GHEXT140 GHEXT050</p>	<p>23.6 18.9 14.2 9.5 5.6</p>



ACROW Aluminium GASS Prop

Product	Description	Code No.	Mass kg (nom.)
	<p>Acrow Aluminium GASS Prop Inner Legs (Adjustable Jacks)</p> <p>Provide adjustment for Outer Leg up to 1314mm. The stem has a removable nut restraint screw to prevent over extension and ensure minimum engagement into the Outer Leg.</p> <p>Inner leg 1680 Inner leg 780</p>	<p>GHINL168 GHINL078</p>	<p>10.2 5.5</p>
	<p>Acrow Aluminium GASS Prop Rocking Head / Base Plate</p> <p>Caters for slopes of up to 15°.</p> <p>Rocking Head / Base Plate MKI Rocking Head / Base Plate MKII</p> <div data-bbox="667 1191 1074 1379" style="border: 1px solid black; padding: 5px; margin-top: 10px;">  <p>4-M12x65 Gr. 8.8 bolts and nuts with washers</p> </div>	<p>GHRHBP GHRHBP2</p>	<p>8.3 8.8</p>
	<p>Acrow Aluminium GASS Prop T225 Aluminium Beam</p> <p>Used mostly as a primary beam.</p> <p>T225 Al Beam 1500 T225 Al Beam 1600 T225 Al Beam 1800 T225 Al Beam 2000 T225 Al Beam 2100 T225 Al Beam 2400 T225 Al Beam 2700 T225 Al Beam 3000 T225 Al Beam 3200 T225 Al Beam 3600 T225 Al Beam 3700 T225 Al Beam 4200 T225 Al Beam 4600 T225 Al Beam 4800 T225 Al Beam 5000 T225 Al Beam 5200 T225 Al Beam 5400 T225 Al Beam 6000 T225 Al Beam 6400</p>	<p>GHSAB15 GHSAB16 GHSAB18 GHSAB20 GHSAB21 GHSAB24 GHSAB27 GHSAB30 GHSAB32 GHSAB36 GHSAB37 GHSAB42 GHSAB46 GHSAB48 GHSAB50 GHSAB52 GHSAB54 GHSAB60 GHSAB64</p>	<p>8.9kg/m 8.9kg/m 8.9kg/m 8.9kg/m 8.9kg/m 8.9kg/m 8.9kg/m 8.9kg/m 8.9kg/m 8.9kg/m 8.9kg/m 8.9kg/m 8.9kg/m 8.9kg/m 8.9kg/m 8.9kg/m 8.9kg/m 8.9kg/m 8.9kg/m 8.9kg/m</p>

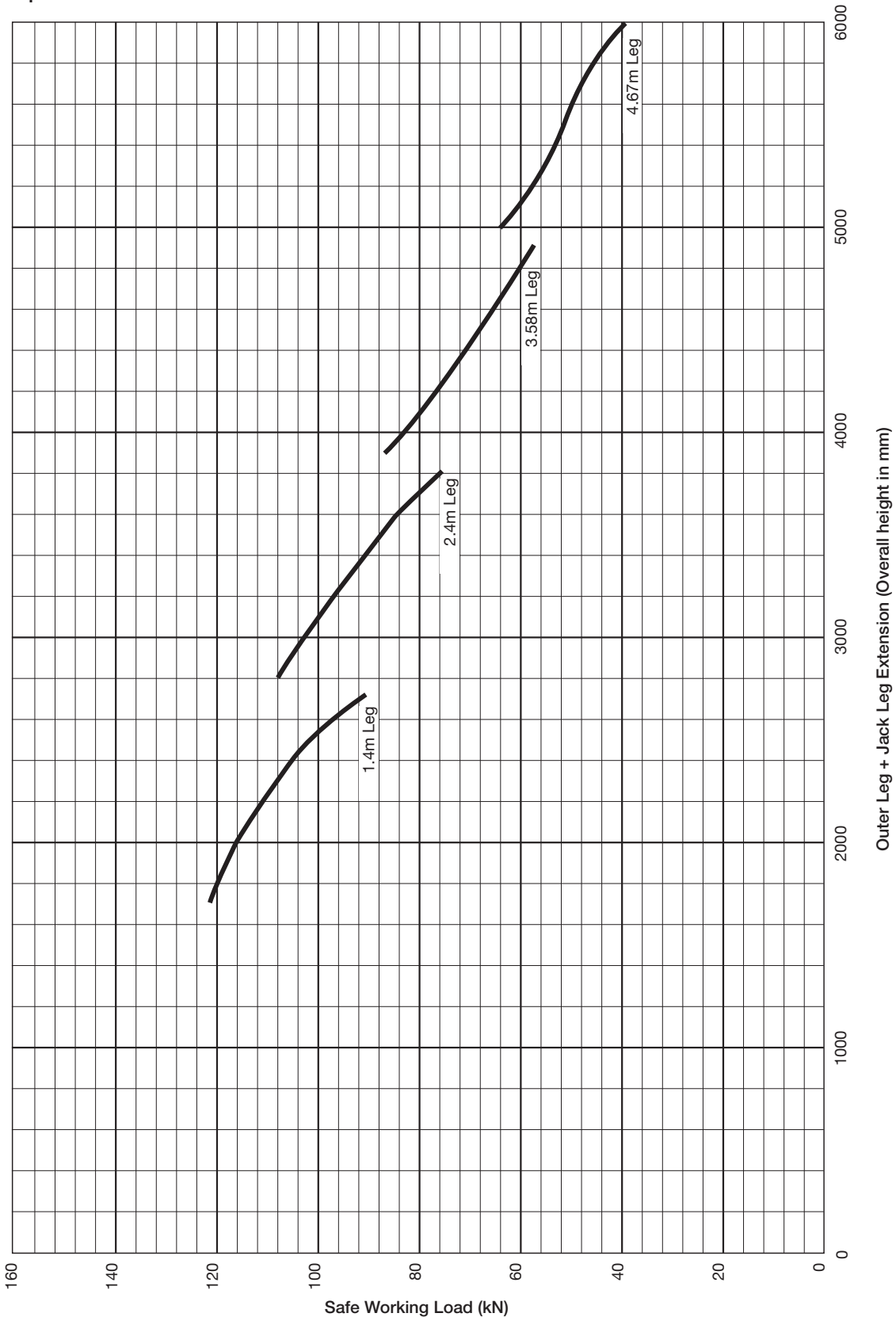
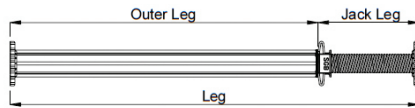
General Product Information

Product	Description	Code No.	Mass kg (nom.)
 <p>The image shows three views of the Acrow Aluminium GASS Prop Ring Bolt Soldier Clamp. On the left is a 3D perspective view of the clamp with a ring. In the middle is a 2D cross-sectional view showing the clamp's profile and the ring. On the right is a 2D side view showing the clamp's attachment to a vertical leg.</p>	<p>Acrow Aluminium GASS Prop Ring Bolt Soldier Clamp</p> <p>Used to connect Slim-Max Soldiers to legs. Two Clamps are required per leg.</p>	GHHSB001	0.5
 <p>The image shows three views of the Acrow Aluminium GASS Prop T-Bolt Clamp (head to beam). On the left is a 3D perspective view of the clamp with a T-shaped head and a ring. In the middle is a 2D cross-sectional view showing the clamp's profile and the T-head. On the right is a 2D side view showing the clamp's attachment to a vertical leg.</p>	<p>Acrow Aluminium GASS Prop T-Bolt Clamp (head to beam)</p> <p>Used to connect Aluminium Beams to legs. Two Clamps are required per leg.</p>	GHHBB001	0.4
 <p>The image shows two views of the Acrow Aluminium GASS Prop Ring Bolt Clamp (head to head). On the left is a 3D perspective view of the clamp with a ring. On the right is a 2D cross-sectional view showing the clamp's profile and the ring.</p>	<p>Acrow Aluminium GASS Prop Ring Bolt Clamp (head to head)</p> <p>Used to connect legs end plates together. Four Clamps are required per connection.</p>	GHHRB001	0.3

ACROW Aluminium GASS Prop

Safe Working Loads - Back Propping

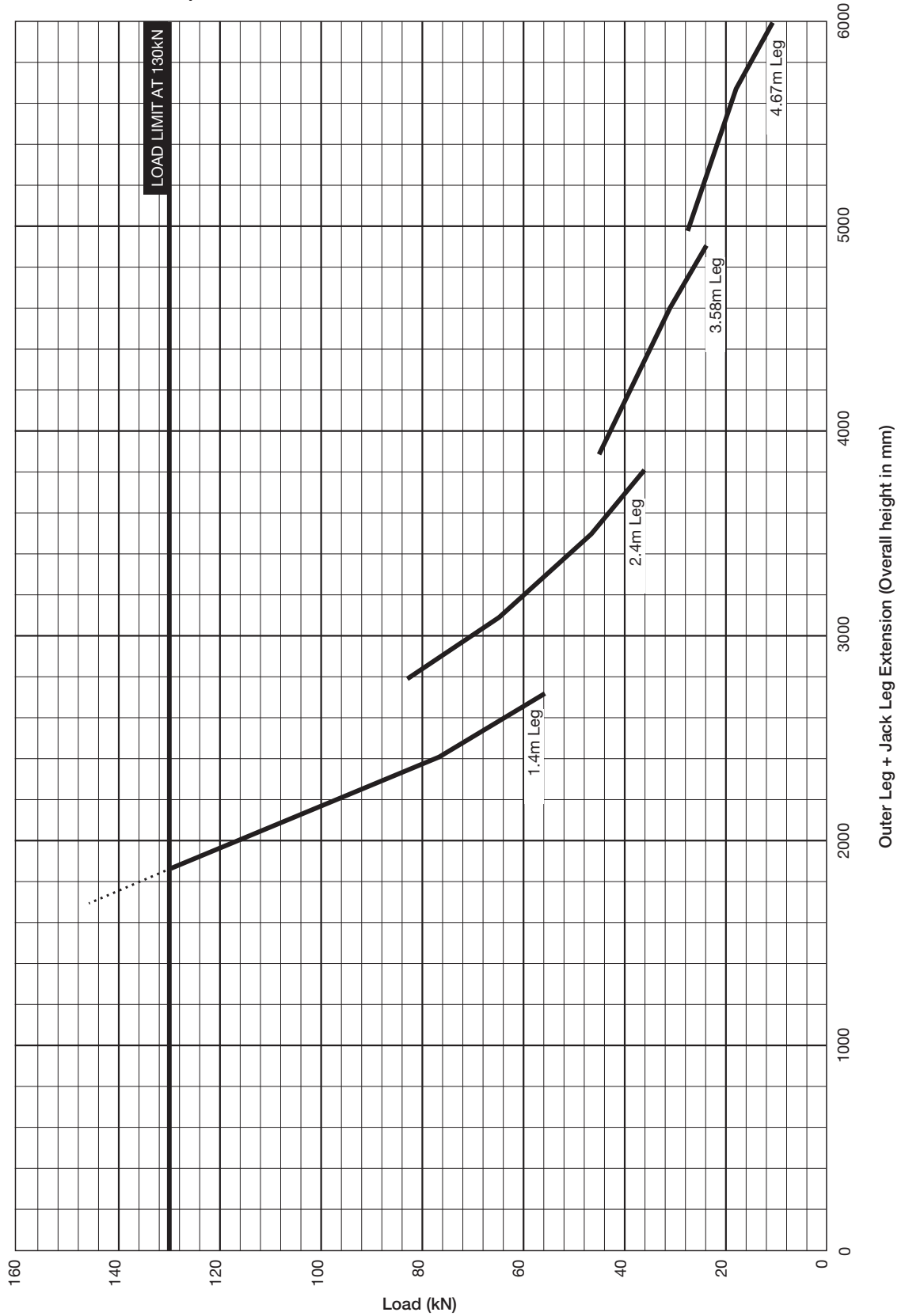
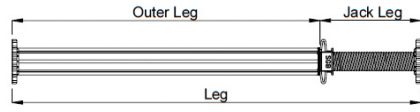
Based on one single leg + 1 No. Jack, Top or Bottom.
 Top and Bottom plates assumed bearing flat on solid supports.
Top and bottom: Restrained



Safe Working Loads - Stand-alone

Based on one single leg + 1 No. Jack, Top or Bottom.
 Top and Bottom plates assumed pinned.

Bottom: Restrained **Top:** Un-restrained



- ▶ Formwork
- ▶ Scaffolding
- ▶ Industrial & Mining Scaffolding



Contact

Phone: 1300 138 362
or contact your business
development manager.
www.acrow.com.au