

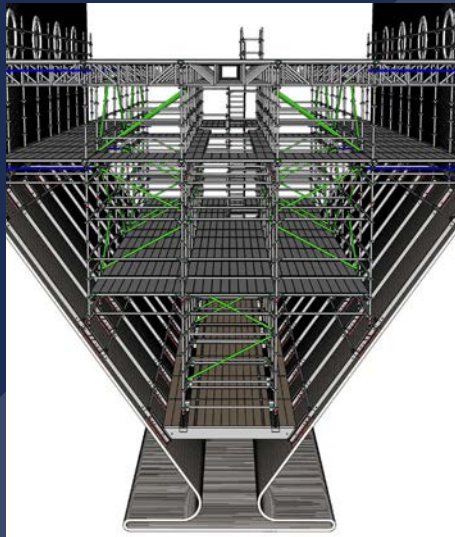


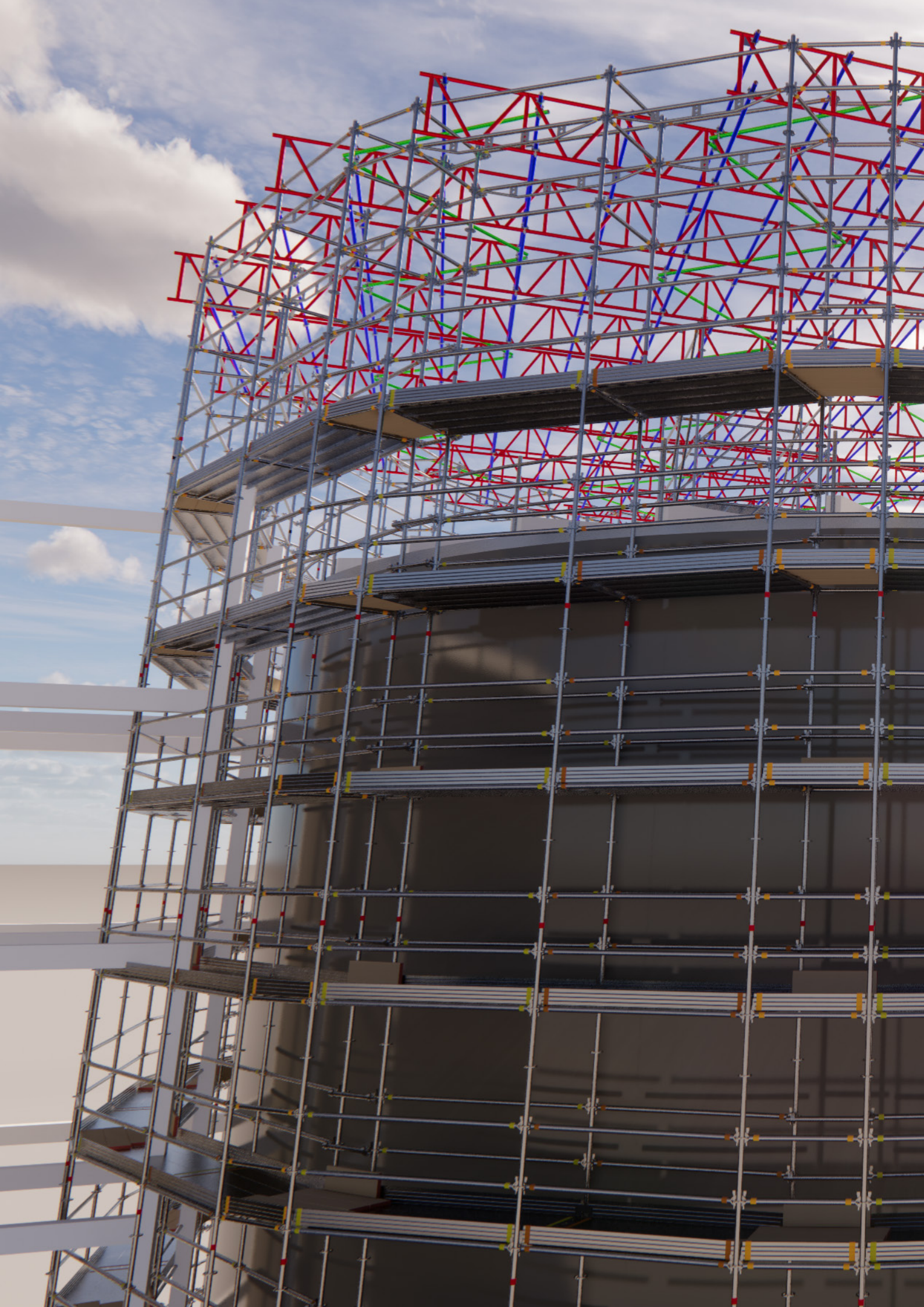
acrow.

ENGINEERING & CONSTRUCTION

FORMWORK, SCAFFOLDING & SCREENS

ENGINEERING PROFILE







About Acrow

Acrow Formwork and Construction Services Limited (ASX: ACF) is a leading provider of smart integrated construction systems across formwork, industrial services and commercial scaffolding in Australia. Enhancing our portfolio are falsework and shoring, screen solutions, Jacking Systems (also known as Jumpform), and internal engineering capabilities.

At Acrow, we are driven by a singular purpose – to elevate industry standards and empower our partners in the industrial and construction sectors to overcome obstacles and achieve unparalleled success.

As one of the nation's largest formwork and scaffolding companies, we specialise in delivering innovative, cost-effective solutions to a diverse portfolio of residential, commercial, civil, and industrial clients. We construct opportunities for growth and progress.

In 2018, our visionary approach led us to acquire Natform Pty Ltd, a renowned specialist in screen systems. Natform has carved a niche as the industry's foremost designer and provider of screen systems, adding a new dimension to our suite of services. Together, we ensure construction sites are not only secure but also conducive to efficient work.

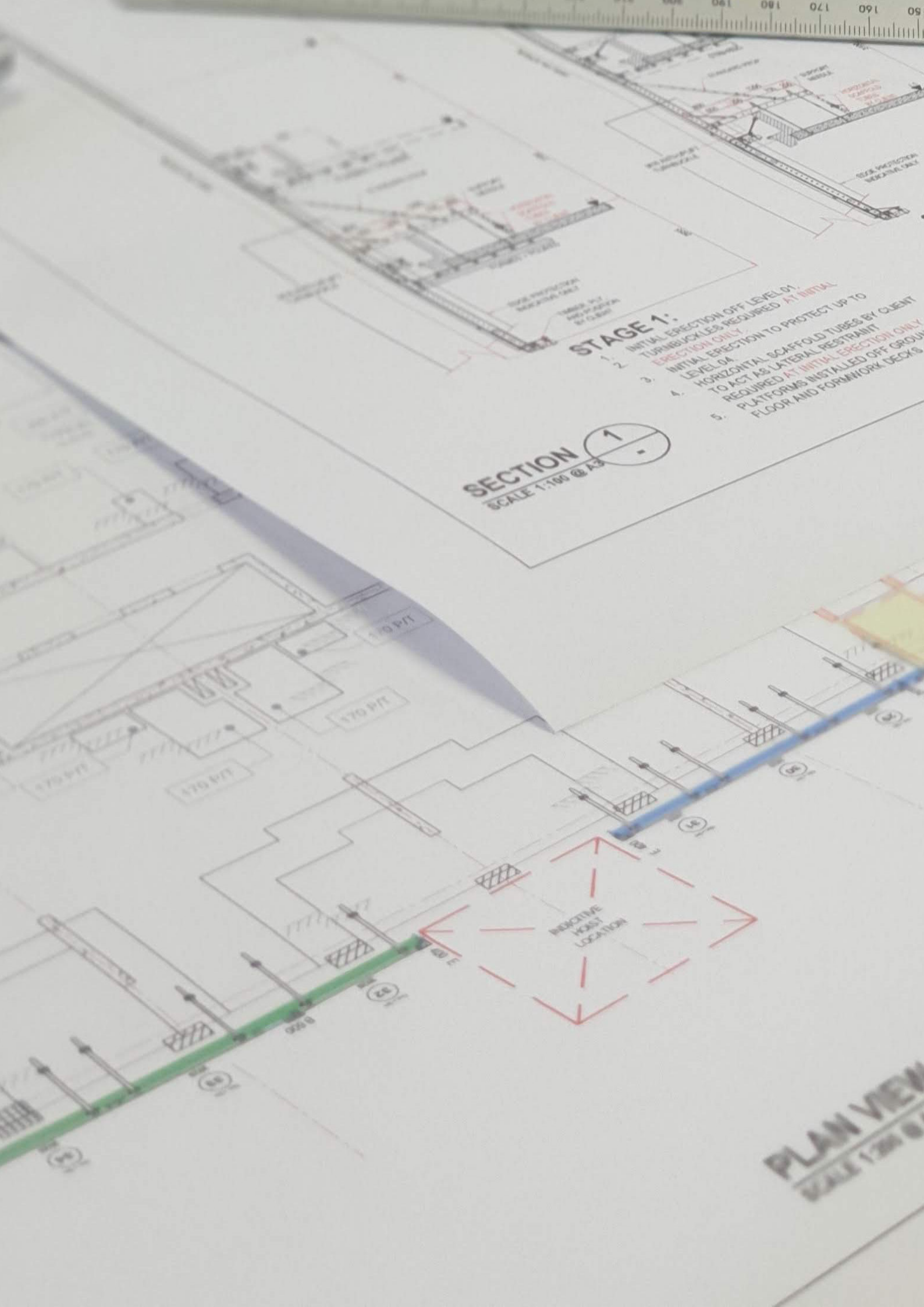
Building on synergies within our operations and recognising a broader scope for specialised formwork and scaffolding systems, Acrow welcomed Uni-span Australia Pty Ltd into its fold in 2019. Uni-span brings a comprehensive array of formwork and scaffolding solutions, equipment, and services, complemented by in-house engineering expertise and a reliable industrial labour supply.

Together, we offer a complete spectrum of support for your projects, from inception to completion.

Acrow boasts a rich legacy of over a century of experience in the Australian market. We've witnessed the evolution of our industry and have consistently pushed boundaries, adapting to changing times while upholding our commitment to quality, safety, and innovation.



acrow.
ENGINEERING & CONSTRUCTION



SECTION
SCALE 1:100

SECTION 1
SCALE 1:100 @ A3

STAGE 1.

- PAGE 1:**
1. INITIAL ERECTION OFF LEVEL 01.
 2. TURNBUCKLES REQUIRED **AT INITIAL ERECTION ONLY.**
 3. INITIAL ERECTION TO PROTECT UP TO LEVEL 04.
 4. HORIZONTAL SCAFFOLD TUBES BY CLIENT TO ACT AS LATERAL RESTRAINT REQUIRED **AT INITIAL ERECTION ONLY.**
 5. PLATFORMS INSTALLED OFF GROUND FLOOR AND FORMWORK DECKS

PLAN VIEW
SCALE 1/2" = 1'-0"

Engineering & Design

This is the heartbeat of our business.

Our objective is to offer innovative-engineered solutions, providing both safety and cost savings for our clients. This is why our engineering and design teams work closely with our clients before the project's inception.

By using practical solutions, supported by safe and economical design in line with Australian Standards, codes of practice and the relevant regulations, we can tailor a cost-effective solution for your project. Whether your project requirement is formwork, scaffolding or screen related, our diverse product range offers superior quality backed by renowned technical support and engineering expertise.

We have the largest dedicated temporary works design team in Australia, with design offices in Brisbane, Gold Coast, Sydney, Melbourne, and Perth.

Our technical capabilities provide a value added service in the form of 3D animation, which can assist in presenting technical solutions to your client in a very unique way. This animation can also serve as a training platform in Pre-starts and Toolbox sessions when discussing Scope of Works, Safe Work Method Statements and Risk Assessments. These animations can be viewed in video format or the 3D model can be placed into a virtual reality space for a immersive and realistic representation of what is being proposed. We also have a Technical Library within our website, containing product catalogues, technical guides and CAD block files for each system.



15 ENGINEERS



15 DRAFTS PEOPLE



5 CHARTERED ENGINEERS



200 DESIGNS PER MONTH



6000 MAN HOURS PER MONTH



200 YEARS EXPERIENCE

Our Engineering Team

MATT CAPORELLA
CHIEF OPERATING OFFICER

EVAN FIELD
NATIONAL ENGINEERING MANAGER

TEAM LEADERS

QLD/TAS

NSW

VIC

WA/SA

SCAFFOLD

MAJOR
PROJECTS

**SENIOR
ENGINEERS**

**PROJECT
ENGINEERS**

**SENIOR
DRAFTSPERSONS**

ENGINEERS

**GRADUATE
ENGINEERS**

DRAFTSPERSONS

**UNDERGRADUATE
ENGINEERS**



acrow.
ENGINEERING & CONSTRUCTION

Resumes

MATTHEW CAPORELLA
CHIEF OPERATING OFFICER

✉ matthew.caporella@acrow.com.au

☎ 0401 895 864

in <https://au.linkedin.com/in/matthew-caporella-87953937>



QUALIFICATIONS

Bachelor of Engineering (Civil)

Bachelor of Business (Management)

CPEng

NER

RPEQ 21573

Member, Engineers Australia, MIEAust

EXPERIENCE

10 years

CAREER SUMMARY

Matthew joined Acrow in 2012 and is Chief Operating Officer for the business, having previously held the position of National Manager – Engineering.

Mr Caporella holds a Bachelor of Engineering (Civil) and Bachelor of Business (Management) from the Queensland University of Technology. He is a Chartered Professional Engineer with the Institute of Engineers Australia and a Registered Professional Engineer Queensland.

EVAN FIELD
NATIONAL MANAGER - ENGINEERING

✉ evan.field@acrow.com.au

☎ 0438 382 013

in <https://www.linkedin.com/in/evan-field-b46b45123/>



QUALIFICATIONS

Bachelor of Engineering (Civil and Environmental Management) – QUT
Master of Advanced Engineering (Structural Engineering Design) – University of Southern Queensland
MIEAust
CPEng (Civil and Structural Colleges)
NER 2711789
RPEQ 12200 (Civil and Structural Disciplines)

EXPERIENCE

16 years

CAREER SUMMARY

Evan is a civil & structural engineer with experience in the design & construction of major civil infrastructure, mining infrastructure, urban development and residential building projects. Evan has advanced design skills in structural steel, reinforced concrete & temporary works. This is complemented by extensive design management, project management and contract administration skills gained from construction engineer roles.



acrow.
ENGINEERING & CONSTRUCTION

Resumes

JEREMY TRICKETT
ENGINEERING TEAM LEADER - QLD/TAS

✉ jeremy.trickett@acrow.com.au

☎ 0401 895 920

in <https://www.linkedin.com/in/jeremy-trickett-2645ba6a/>



QUALIFICATIONS

Bachelor of Engineering (Civil & Construction)
NER 4254016
RPEQ 21887
CPEng

EXPERIENCE

16 years

CAREER SUMMARY

Chartered Professional and RPEQ Engineer with more than sixteen years' experience in both formwork and scaffolding across the civil, industrial, mining, and residential sectors.

FREDERICK DAGANDAN
ENGINEERING TEAM LEADER - NSW

✉ frederick.dagandan@acrow.com.au

☎ 0488 016 469

in <https://www.linkedin.com/in/frederick-dagandan-085021140/>



QUALIFICATIONS

Bachelor of Engineering - Civil (Honours) - University of Western Sydney '98
MIEAust 1458486, CPEng NER (Civil Engineering, Structural Engineering)
RPEQ 24710 (Civil Engineering, Structural Engineering)

EXPERIENCE

23+ years

CAREER SUMMARY

Fred is an experienced Civil Engineer with 23+ years of design and major project delivery experience in the Building, Construction and Industrial Services industries in Australia and New Zealand. Fred has a wide range of design experience through his years of working in multiple temporary works projects. He has a proven track record on design leadership to successfully deliver high risk and complex project requirements.



acrow.
ENGINEERING & CONSTRUCTION

Resumes

NICK HOBBS
ENGINEERING TEAM LEADER - VIC

✉ nick.hobbs@acrow.com.au

☎ 0438 387 689

in <https://www.linkedin.com/in/nicholasjhobbs>



QUALIFICATIONS

Associate Degree in Civil Engineering – Southbank Institute of Technology
Diploma of Computer Aided Drafting – Southbank Institute of Technology
Bachelor of Engineering (Civil and Structural Engineering) – QUT
Graduate Certificate of Advanced Engineering (Structural) – University of Southern Queensland
MIEAust
RPEng (Structural)
RPEQ 23938 (Structural)

EXPERIENCE

9 years

CAREER SUMMARY

Structural engineer with over 9 years of experience in temporary works design with respect to civil, commercial and industrial construction sectors.

JAMES HAMMETT
ENGINEERING TEAM LEADER - QLD/INDUSTRIAL

✉ james.hammett@acrow.com.au

☎ 0401 896 665

in <https://www.linkedin.com/in/james-hammett-28b93863/>



QUALIFICATIONS

Bachelor of Engineering (Hons)
MEPR
CPEng
RPEQ 21368
NER

EXPERIENCE

15 years

CAREER SUMMARY

James is a Chartered Structural engineer with more than 15 years of formwork and scaffold design and project management experience in the commercial, civil, mining and energy sectors, specialising in complex and technically demanding formwork such as tunnels, arches, bespoke steel fabrications and inclined soffits.

During his career, he has worked for most of the main formwork suppliers in Australia and has undertaken numerous roles such as Designer, Sales, Regional Design Manager, Senior Engineer and Team Leader.

Resumes

TOMAS KRENEK
SENIOR ENGINEER - CONSTRUCTION SERVICES

✉ tomas.krensek@acrow.com.au

☎ 0472 718 523

in <https://www.linkedin.com/in/tomas-krensek-435b5634/>



QUALIFICATIONS

Bachelor of Engineering (BEng), Structural Engineering and Architecture -
Industrial Engineering and Building Construction
Post Graduate Design Course, Building Construction Technology
MIEAust
CPEng
RPEQ
NPER

EXPERIENCE

17 years

CAREER SUMMARY

Tomas is a chartered structural engineer with extensive experience in temporary works design. He has an in depth understanding of all aspects of temporary works engineering in the building construction and civil infrastructure sectors.

MICHAEL PARKINSON
ENGINEERING TEAM LEADER - WA/SA

✉ michael.parkinson@acrow.com.au

☎ 0400 000 946

in <https://www.linkedin.com/in/michael-parkinson-20818a99/>



QUALIFICATIONS

Bachelor of Engineering (BEng) Civil Engineering
Master's Degree, Civil Engineering (cum laude)
CPEng

EXPERIENCE

15 years

CAREER SUMMARY

Michael is a structural engineer with experience in the design & construction of major civil and mining infrastructure projects. Michael has practical formwork and falsework design skills as both an engineer & formwork carpenter and has delivered formwork and falsework designs across most of Australia's recent major infrastructure projects.

Resumes

FAIZ AL-SAMMAK
QUALITY ASSURANCE ENGINEER

✉ faiz.alsammak@acrow.com.au

☎ 0450 981 966

in <https://www.linkedin.com/in/faiz-al-sammak/>



QUALIFICATIONS

Bachelor of Architectural Engineering – University of Technology, Baghdad, Iraq, 1988

Master of Architectural Engineering – University of Technology, Baghdad, Iraq, 1994

Chartered Professional Engineer – CPEng

NER

Member, Engineers Australia, MIEAus (Civil Engineering)

EXPERIENCE

25 years

CAREER SUMMARY

Faiz is a senior product development and design manager in the construction industry. Vast experience in quality and compliance: developing and implementing quality system, ensure complying with relevant legislation, standards and codes of practice. Led organization achieving and implementing ISO 9001-2016 Quality Management System accreditation.

Faiz has in-depth business knowledge of managing complex projects and scenarios. Faiz has extensive experience in managing precast concrete businesses, achieved record outcomes. Faiz earlier roles involved work experience in New Zealand, Fiji and the Middle East.

1997 – 2003; Vector Ltd – Network Project Management, Network and Contractor Quality Auditor

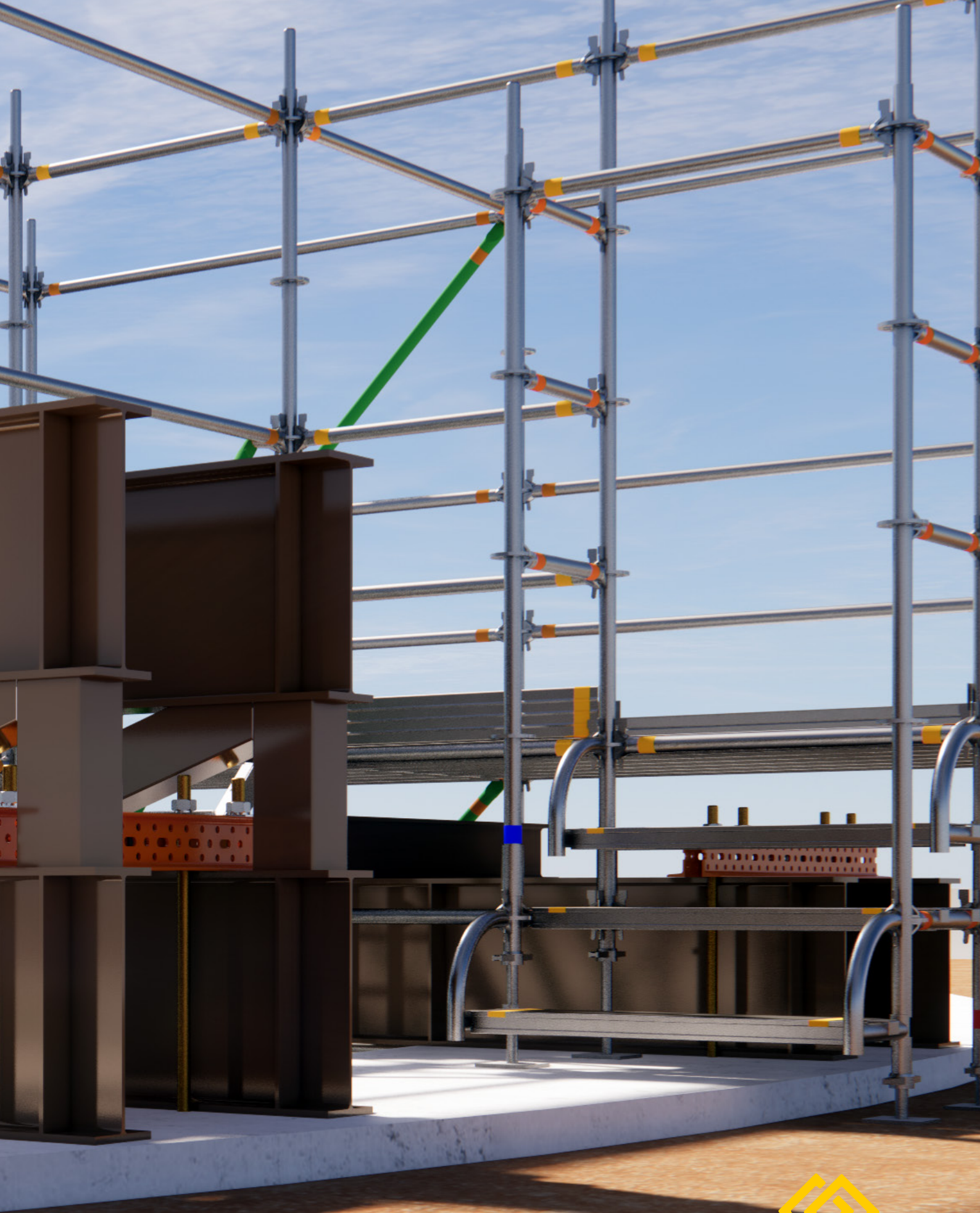
2003 – 2007; Holcim New Zealand, Humes Fiji – General Manager

2007 – 2012; Humes, a Division of Holcim Australia – National Manager Precast Solutions (Engineered Structures)

2013 – 2018; Austral Precast – Quality and Compliance Manager

2018 – 2018; Tobin Projects – Design Manager

2019 – current; Acrow – Quality Assurance and Product Development Engineer



acrow.
ENGINEERING & CONSTRUCTION



Certificate of Compliance
INTEGRATED QUALITY CERTIFICATION PRIVATE LIMITED
hereby certifies that the Quality Management Systems of
Acrow Formwork and Construction Services Limited

159 Wellington Road, Clayton, VIC 3168.

has been assessed and conforms to the
Quality Management Systems
ISO 9001:2015



Scope: Engineering and design of formwork and scaffolding.

Subdivision : 69
Class : 6923
Process(es) not applicable : 8.3
Certificate number : AUS/QMS/JAS-C0063/RC1/1213
Attachment(s) : None

Initial issue date : 31.03.2020
Current issue date : 25.05.2023
Current expiry date : 30.03.2026
1st Surveillance due : 25.05.2024
2nd Surveillance due : 25.05.2025



Suma Shankar
Suma Shankar
Director

Certificate of compliance has an expiry period of 3 years from the current certification cycle start date but shall be considered as expired if the surveillance audit programme indicated in this certificate of compliance is not implemented to maintain confidence that the certified management system continues to fulfil requirements unless otherwise supported by a letter of continued compliance issued by the registered office of Integrated Quality Certification Pvt. Ltd. Certificate of compliance shall be updated in website/registry as suspended and/or withdrawn if the surveillance programme prior to the due date indicated above is not coordinated and implemented. Written information on any significant organizational changes with impact on the certificate of compliance shall be communicated to Integrated Quality Certification Pvt. Ltd prior to the planned audit schedule.

Corporate Office : Platinum City, G/13/03, Site # 02, Next to CMTI, HMT Road, Yeshwanthpur Post, Bangalore - 560 022, India.
Tel : +91(80) 41172752, 41277353, 41280347, Email : iqccorporate@iqcglobal.com Website : www.iqcglobal.com.
CIN : U74140KA2003PTC031851.

Australia Representative : 4, Bernard Street, Cheltenham, Victoria 3192.
Tel : +0061-450737576 E-mail : sam@iqcglobal.com

Please visit www.iqcglobal.com and / or www.jas-anz.org to verify the authenticity and validity of this certificate of compliance
QF-13A Rev 00 date 04.12.2019

ISO 9001:2015

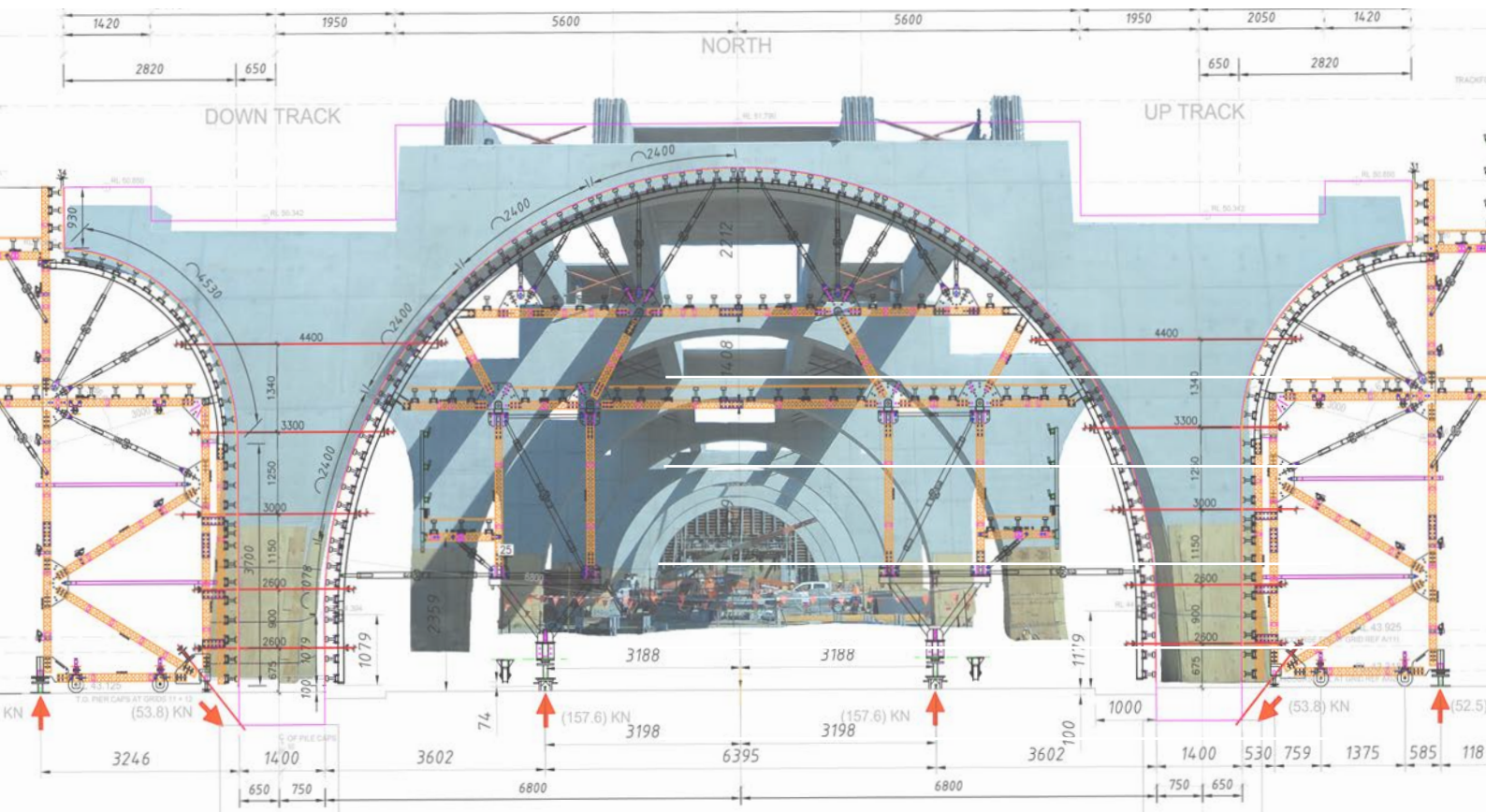
The Engineering and Design division of our business is ISO9001:2015 accredited.

Our team has thorough knowledge of the relevant regulatory requirements, codes of practice and Australian Standards, which enable us to advise our clients on design and compliance demands for their project needs.

Our objective is to offer innovative-engineered solutions, providing both safety and cost savings for our clients. This is why our engineering and design teams work closely with our clients before the project's inception.

By using practical solutions, supported by safe and economical design in line with Australian Standards, codes of practice and the relevant regulations, we can tailor a cost effective solution for your project.

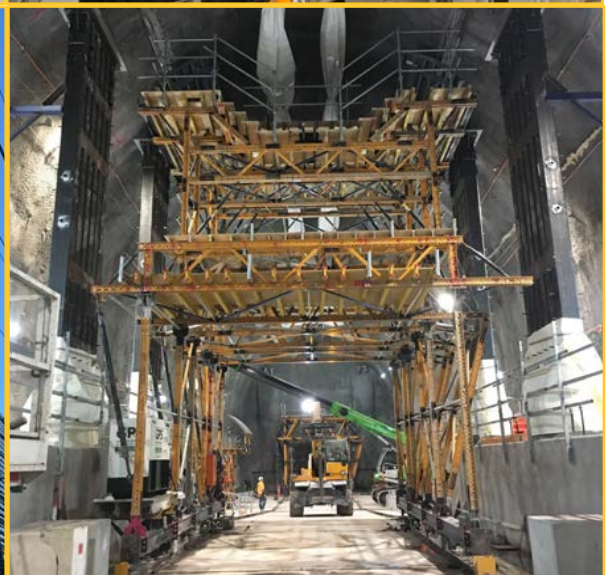
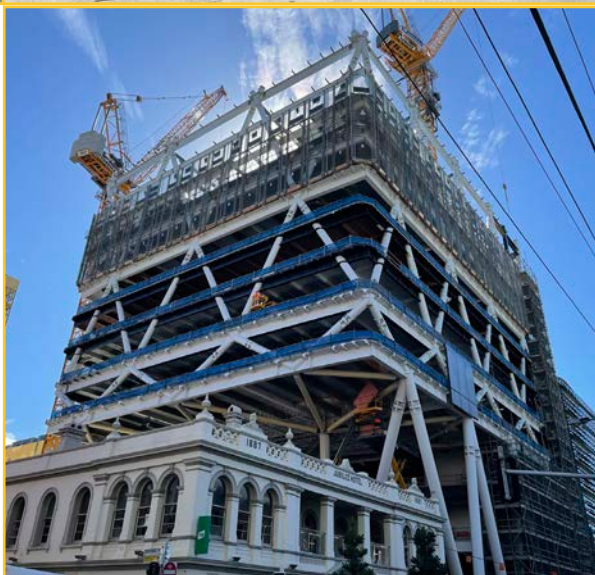
Whether your project requirement is formwork, scaffolding or screen related, our diverse product range offers superior quality backed by renowned technical support and engineering expertise.



Project Gallery



acr
ENGINEERING & CONSTRUCTION





acrow.
ENGINEERING & CONSTRUCTION

Contact

Phone: 1300 138 362

www.acrow.com.au